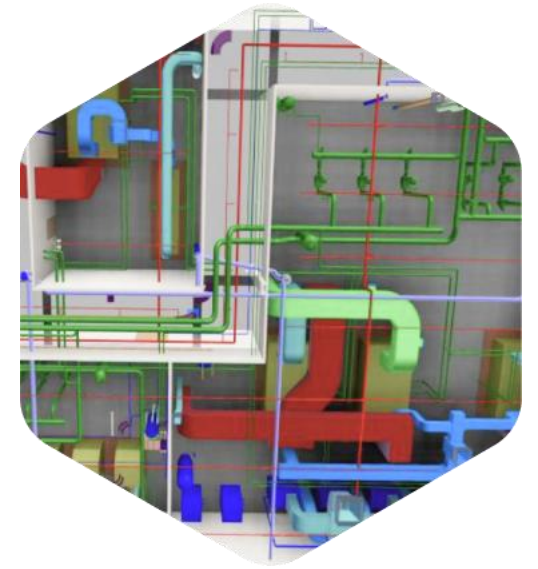




# COMPANY OVERVIEW

Advenser is a multinational, multi-disciplined engineering company delivering advanced engineering services & solutions to the construction industry through innovative practices, utilizing BIM and advanced technological tools. Since 2007, we have accumulated extensive experience in the AEC industry, delivering a variety of complex projects across multiple countries with a proven track record of success.

Our engineering team, with a workforce of more than 300+ Engineers with Architectural, Structural and MEP experience, have the expertise and skillsets to meet the demands of any complex project anywhere in the world. We streamline our services to match & adapt to your constantly evolving needs.



**1K+**  
CLIENTS



**20+**  
COUNTRIES



**10K+**  
PROJECTS



**300+**  
PEOPLE



# ADVENSER DIFFERENTIATORS



## **Proven Expertise and Global Presence**

Serving clients worldwide with a proven track record of successfully delivering complex projects.



## **Strong Focus on Quality and Accuracy**

Multi-tiered quality checks ensure precise, error-free deliverables every time.



## **Flexible and Scalable Resource Pool**

Easily scale teams up or down to match changing project needs without delays.



## **Competitive Pricing and Cost Predictability**

Transparent, cost-effective pricing structures with no hidden surprises.



## **Technology-Driven Processes**

Advanced tools and automation streamline workflows and maximize productivity.



## **Client-Centric Engagement**

Personalized service and proactive communication tailored to your project goals.



## **Domain-Specific Teams**

Dedicated specialists with deep industry knowledge for domain-specific solutions.



## **Robust Data Security**

Strict compliance with global data protection standards to safeguard your information.



## **Onshore-Offshore Hybrid Support**

A balanced delivery model that blends local presence with global execution strengths.

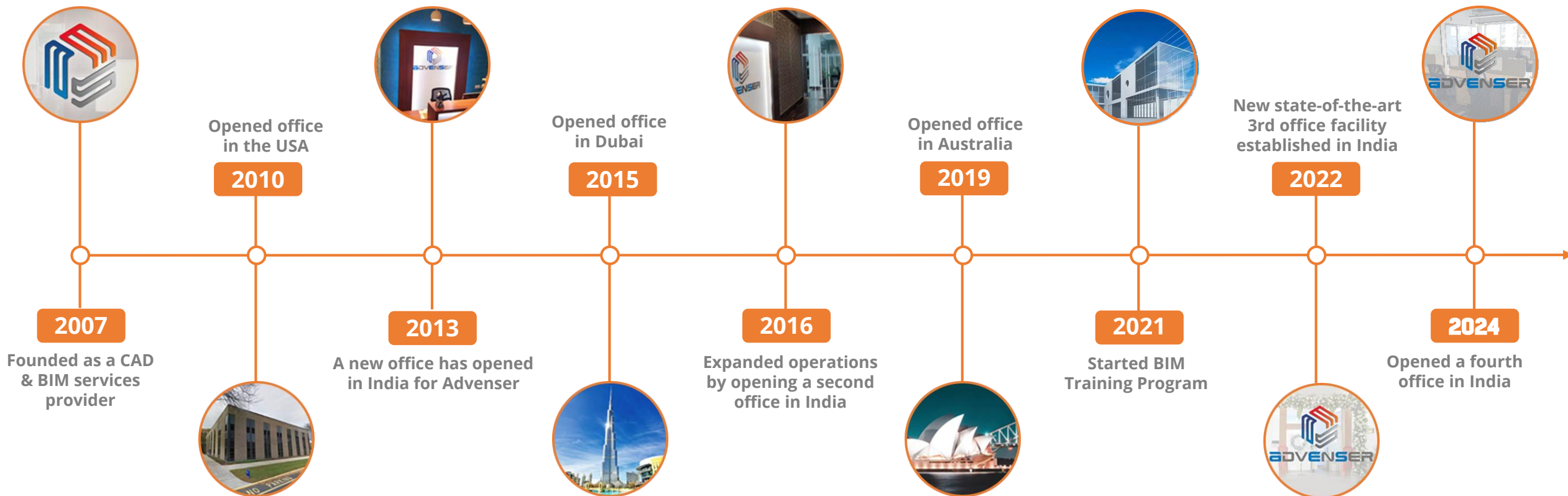


## **Commitment to Continuous Improvement**

Continuous process enhancements to increase efficiency and deliver greater value.



# OUR HISTORY



# OUR CLIENT BASE



# PARTNERS & ASSOCIATIONS



Technology experts and Industry  
Associations that extend and enhance  
learning and productivity through training  
& collaboration





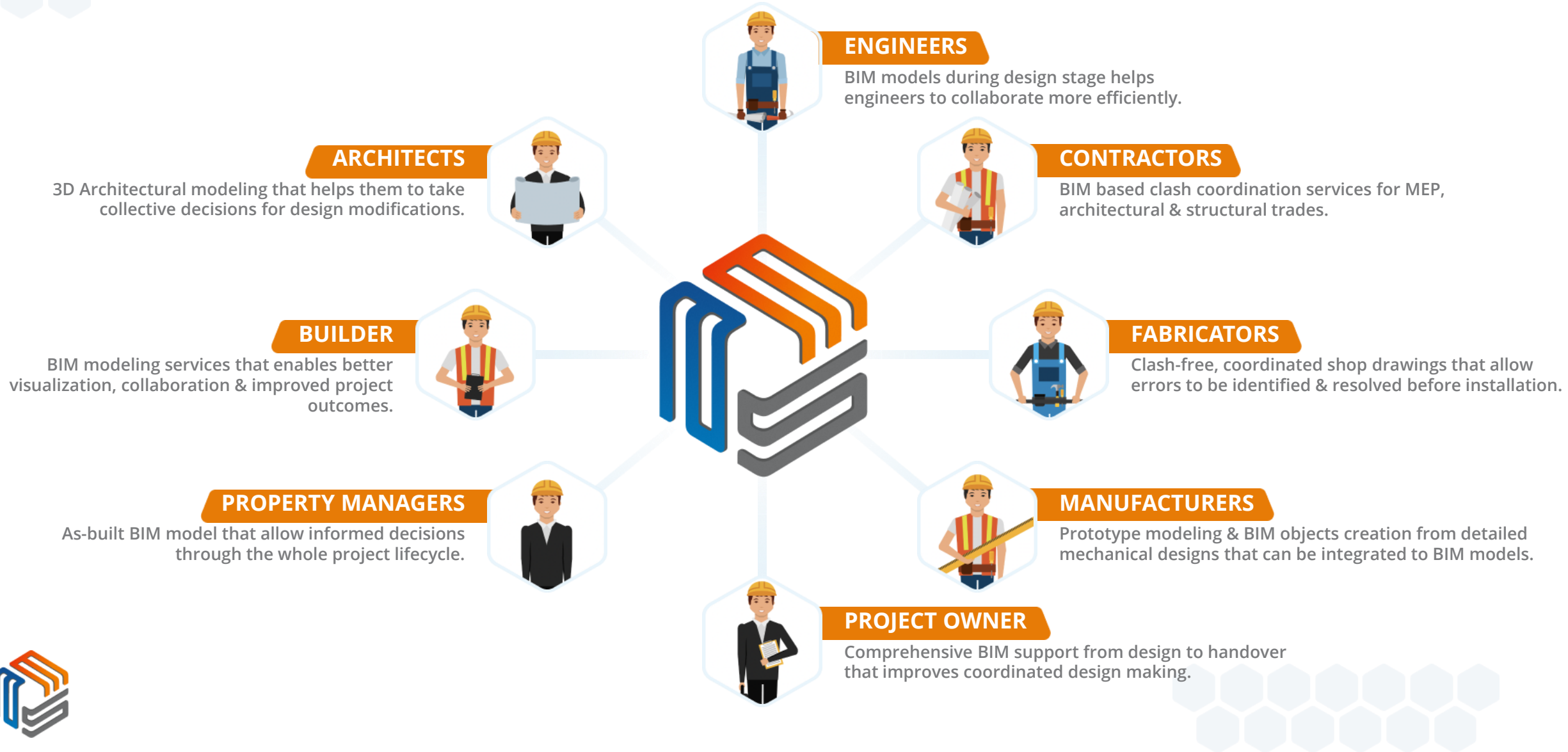
# POLICIES GUIDING OUR OPERATIONS

With projects spanning diverse geographies and business practices across, Advenser consistently strives to align countries its operations with a robust policy framework to ensure compliance with country-specific regulations, global standards, and cultural expectations.

- ✓ Data Protection, Privacy, Confidentiality, & Cyber Security Policy
- ✓ Code of Conduct and Ethics Policy
- ✓ Environmental Policy
- ✓ Anti-Corruption and Anti-Bribery Policy
- ✓ Labour Compliance and Human Rights Policy
- ✓ Modern Slavery prevention statement
- ✓ Supplier Diversity and Community Inclusion Policy
- ✓ Workplace Health and Safety Policy
- ✓ POSH (Prevention of Sexual Harassment) Policy



# ADVENSER IN BIM SUPPLY CHAIN





# OUR SERVICES

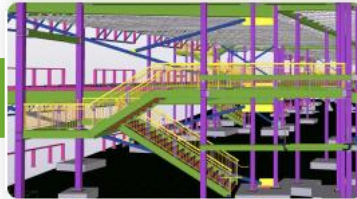
## ARCHITECTURAL BIM



## FAÇADE DETAILING



## STEEL DESIGN AND DETAILING



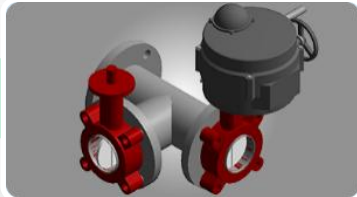
## INTEGRATED BIM



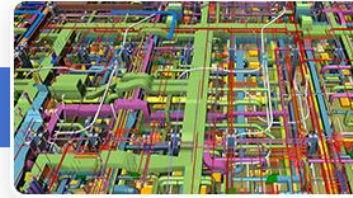
## INFRASTRUCTURE BIM



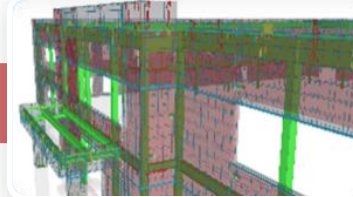
## BIM OBJECT LIBRARIES



## MEP BIM



## PRECAST / REBAR DETAILING



## SCAN TO BIM



## INDUSTRIAL PLANT DIGITIZATION



## MECHANICAL CAD/CAM



## BIM CONSULTING AND TRAINING



# ARCHITECTURAL MODELING

Intelligent visualization of projects with broad level of details and calculations to improve the quality of delivery and turnaround the time.

**ARCHITECTURAL BIM**

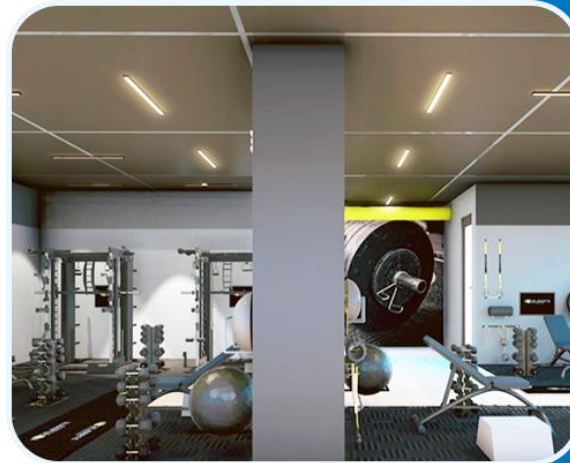
**SHOP DRAWING CREATION**

**DESIGN DEVELOPMENT**

**CONSTRUCTION DOCUMENTATION**

**POINT CLOUD MODELING**

**MILLWORK SHOP DRAWINGS**





# MEP & HVAC BIM

We place ourselves before the AEC industry as a conversant workforce of MEP/HVAC engineers providing MEP BIM services to various sectors which include educational institutions, healthcare, plants, residential, commercial and industrial buildings.

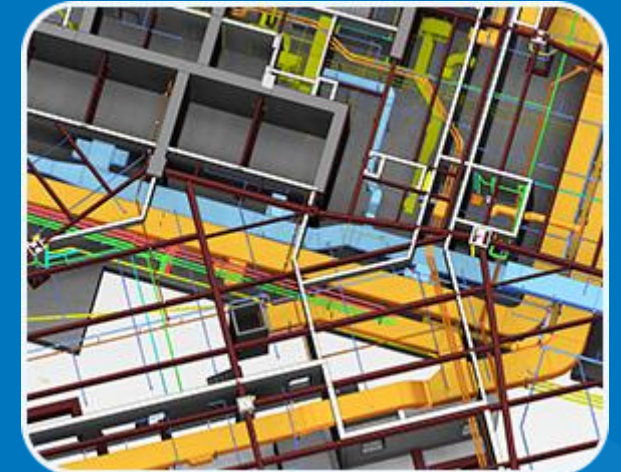
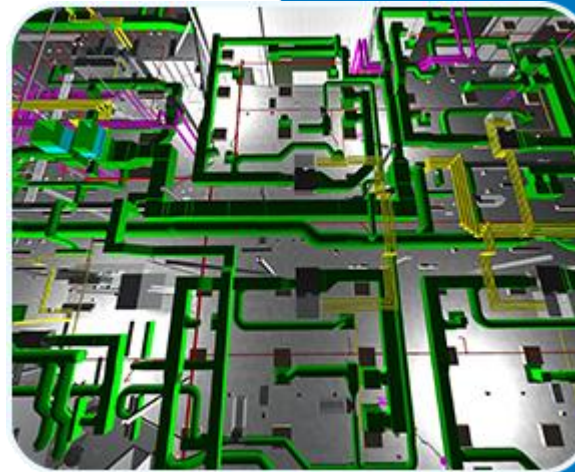
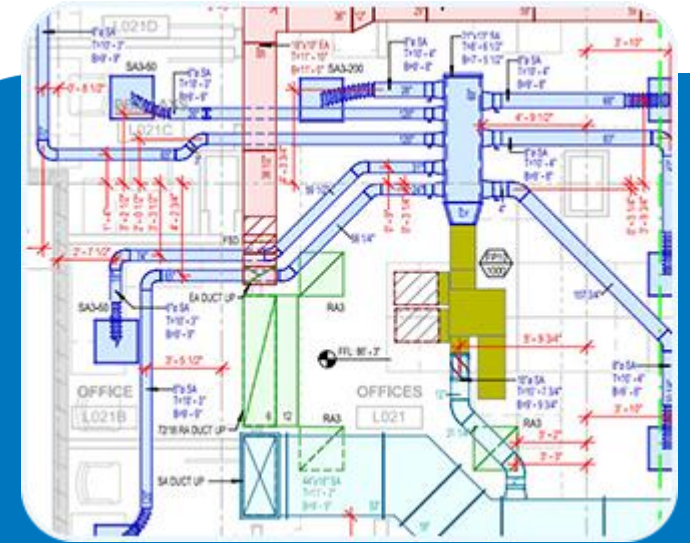
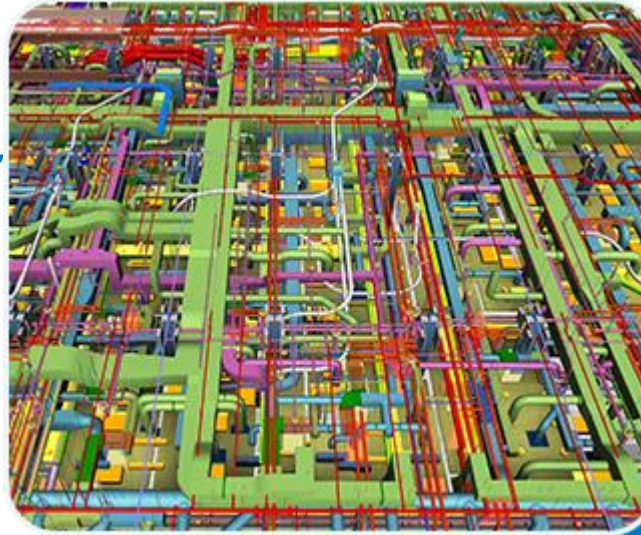
**3D COORDINATION & CLASH REPORT**

**SHOP & FABRICATION DRAWING**

**DESIGN DEVELOPMENT**

**POINT CLOUD MODELING**

**SPOOL DRAWING**



# STEEL DESIGN AND DETAILING

An established lineup of effective detailing services to ensure effective management of design and project constructability for reduced cost of installation and business growth.

**STRUCTURAL STEEL DETAILING**

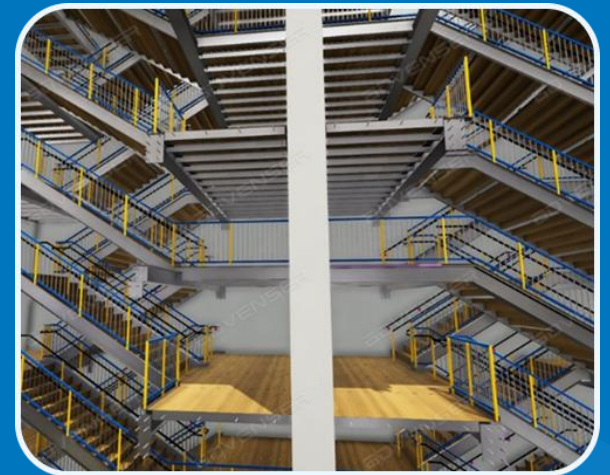
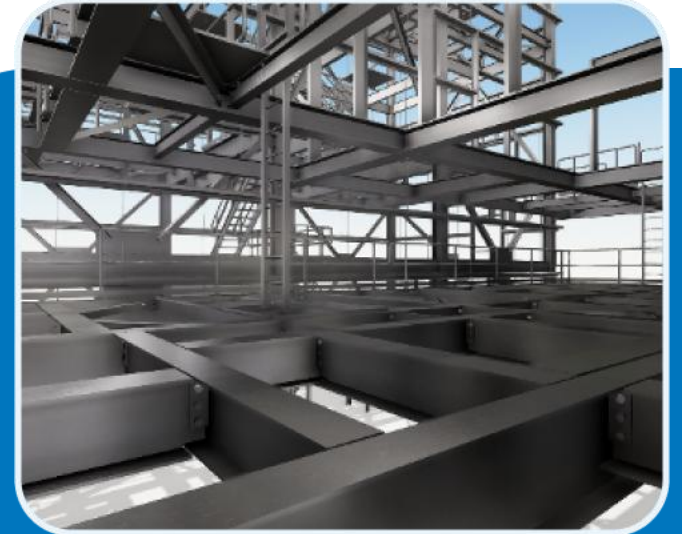
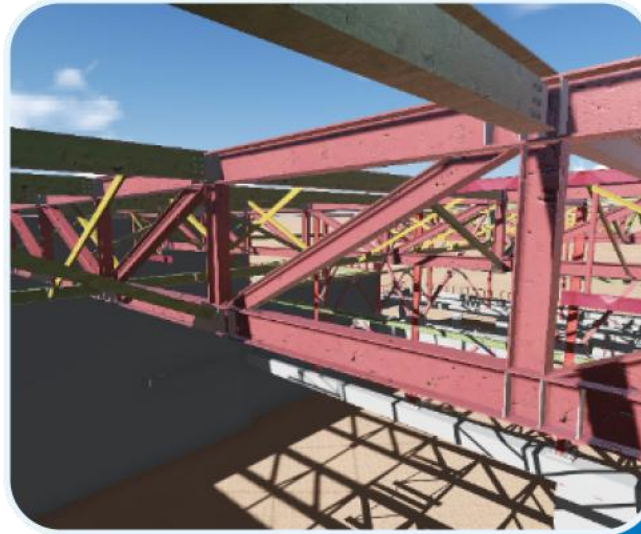
**STRUCTURAL 3D MODELING**

**ESTIMODELING SERVICES**

**MISCELLANEOUS STEEL DETAILING**

**STRUCTURAL STEEL CONNECTION DESIGNS**

**STRUCTURAL STEEL CONNECTION CALCULATIONS**





# PRECAST/REBAR CONCRETE DETAILING

Expert concrete detailing services, including precast and rebar detailing, to ensure design precision, reduce costs, and streamline project execution for improved efficiency and growth.

## PRECAST PANEL DETAILING

### BAR BENDING SCHEDULES (BBS)

### REBAR PLACEMENT DRAWINGS

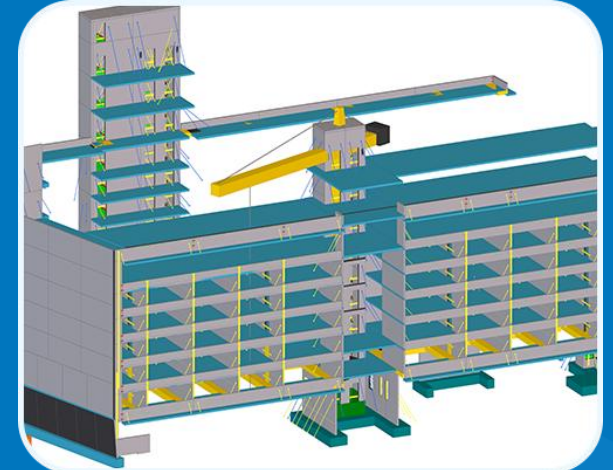
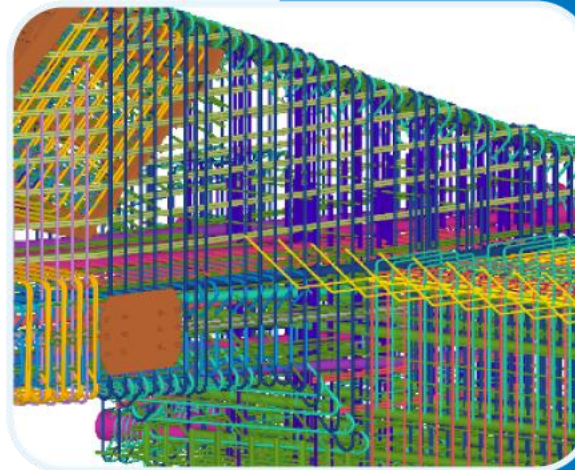
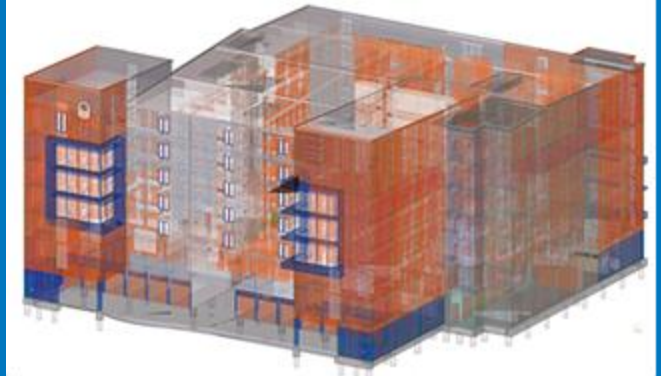
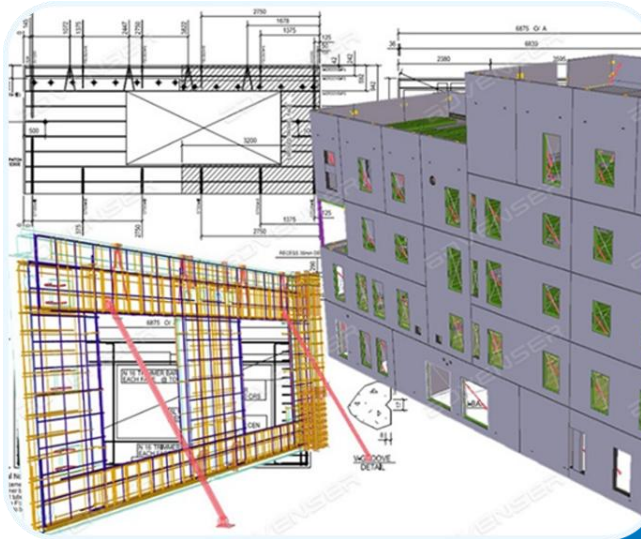
### PRECAST SHOP DRAWINGS/SHOP TICKETS

### PRECAST DOWEL LAYOUT

### PRECAST BRACING LAYOUT

### PRECAST MARKING/PLAN AND ELEVATIONS

### QUANTITY TAKE-OFFS (BOM)



# FACADE ENGINEERING SERVICES

Accurate shop & fabrication drawings enabling clients to plan for optimized & balanced production of building envelope systems

**CURTAIN WALLS**

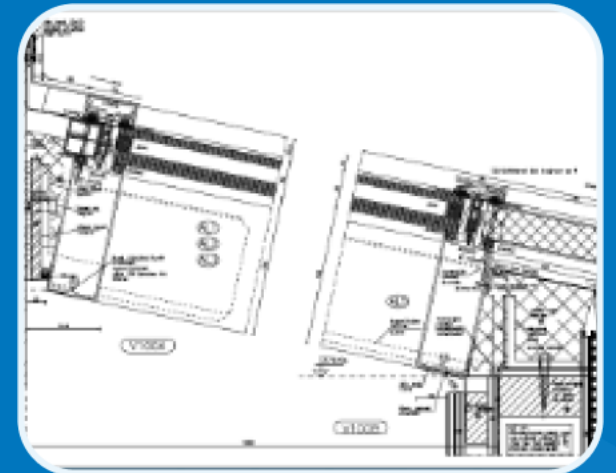
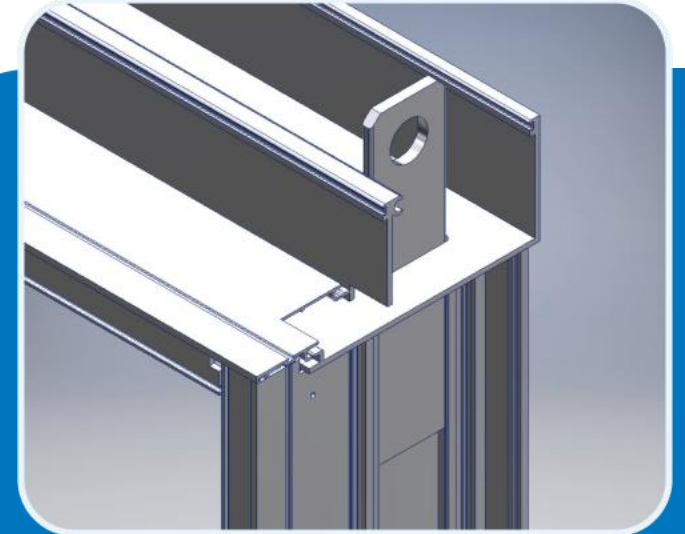
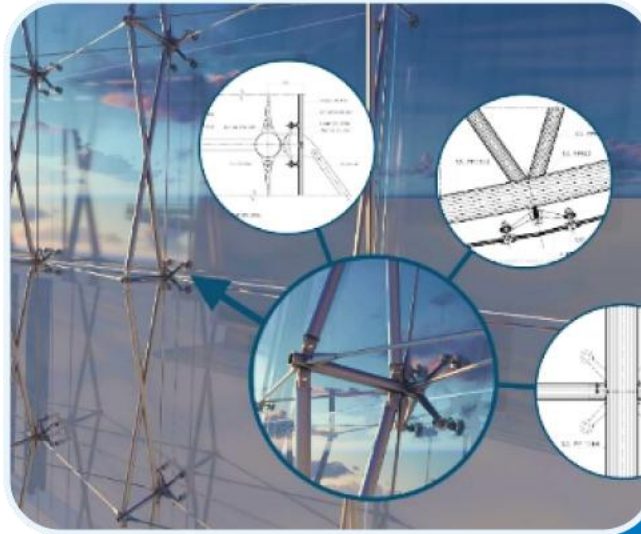
**SPIDER GLAZING**

**SHOP FRONTS & FRAMELESS GLASS**

**METAL PANELS & HAND RAILS**

**SKY LIGHTING & CANOPIES**

**WINDOWS, SLIDING/PARTITION DOORS**





# CLASH DETECTION & RESOLUTION

Seamless coordination of MEP with Architecture & Structural trades, allowing all systems to work in perfect synchronization and at the same time maintaining the design intent

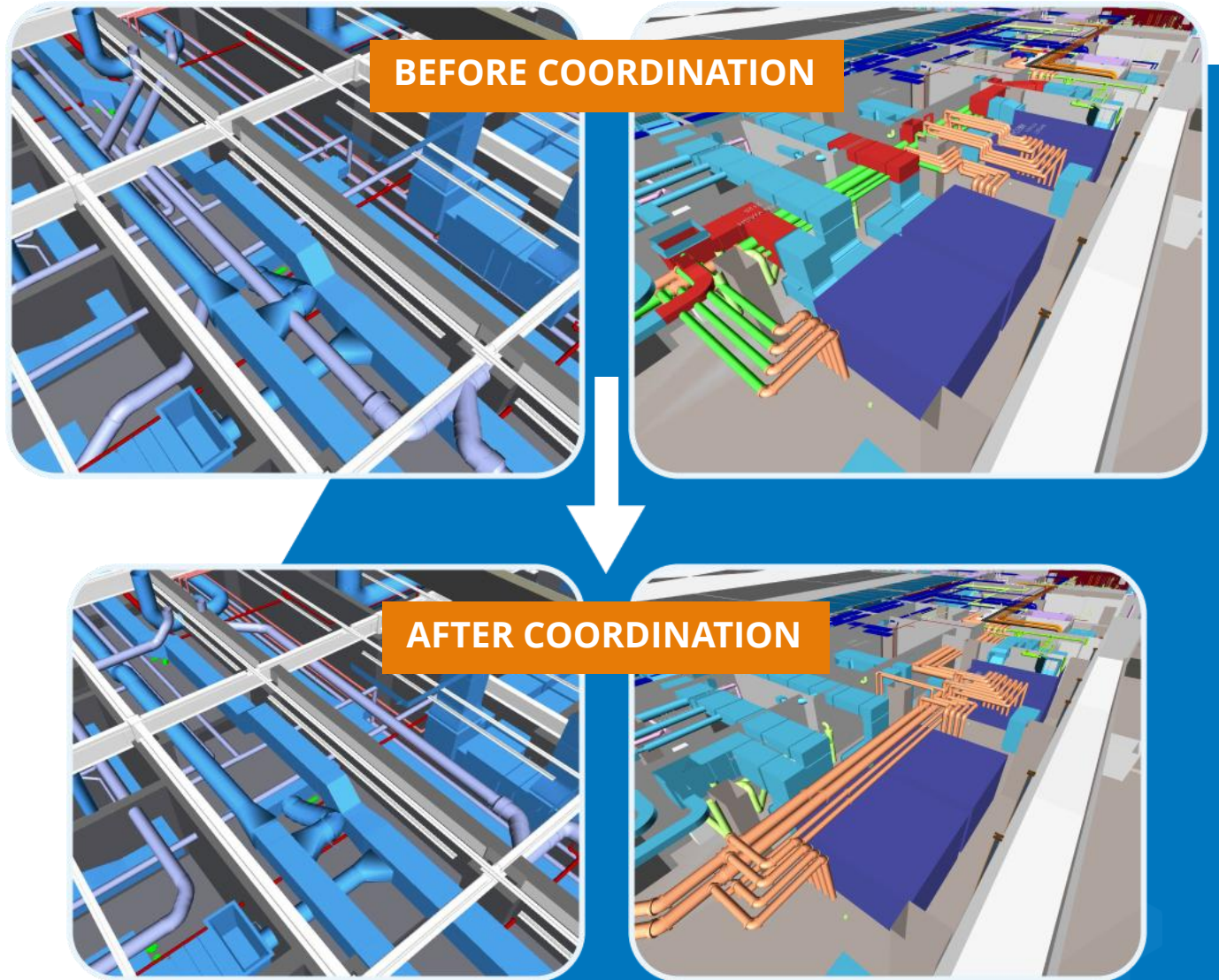
**ARCHITECTURAL BIM**

**STRUCTURAL BIM**

**MEP BIM**

**RESOLUTION OF CLASHES**

**ONLINE COORDINATION MEETINGS**



# INTEGRATED BIM PROJECT DELIVERY

Helping organizations leverage the potentials of BIM  
integrating architectural, structural, mechanical &  
plumbing systems

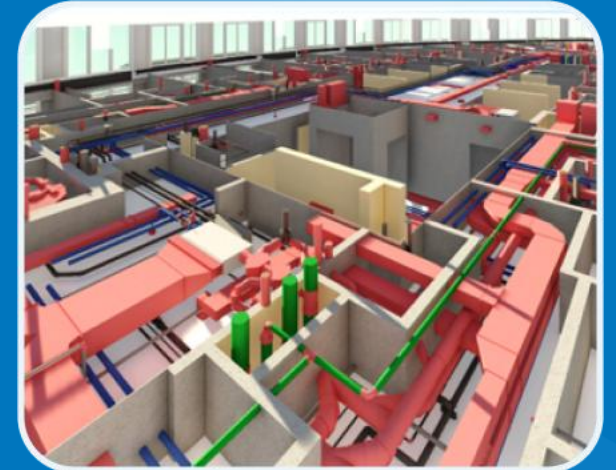
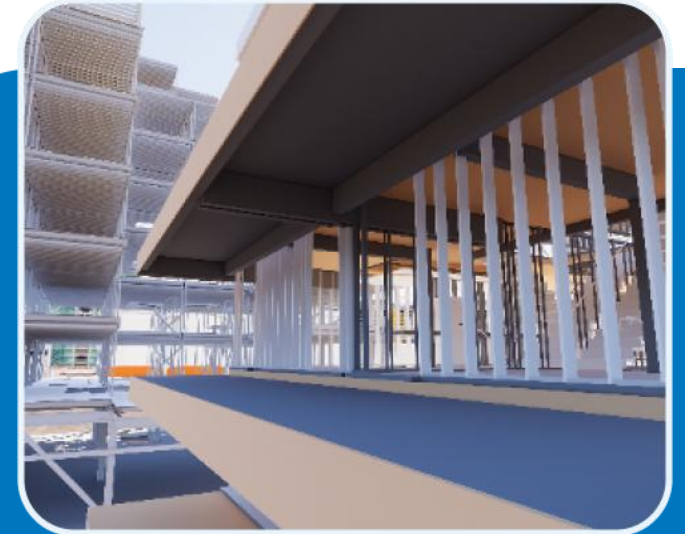
**ARCHITECTURAL BIM**

**STRUCTURAL 3D MODELING**

**HVAC & PLUMBING MODELING**

**BIM CLASH COORDINATION**

**SHOP/FABRICATION DRAWINGS**





# INFRASTRUCTURE BIM

Integrated approach to model multi-disciplined trades for utility structures, power stations, water treatment plants, highways & bridges

**BIM FOR WATER TREATMENT PLANTS**

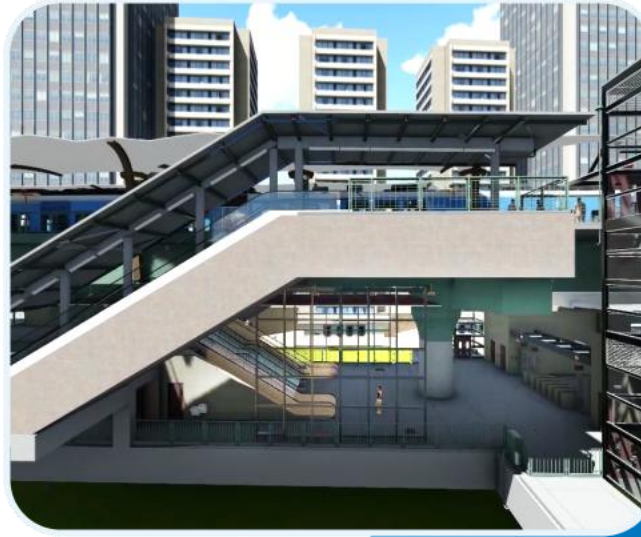
**LANDSCAPE & SITE MODELING**

**BIM FOR TUNNEL CONSTRUCTION**

**BIM FOR BRIDGE CONSTRUCTION**

**MARINE/OFFSHORE STRUCTURE MODELING**

**BIM FOR TRANSPORTATION**



# MECHANICAL CAD/CAM

Our core expertise lies in providing 2D drafting & CAD 3D modeling services to clients for the fabrication & manufacturing of mechanical components.

**SHOP DRAWINGS**

**FABRICATION DRAWINGS**

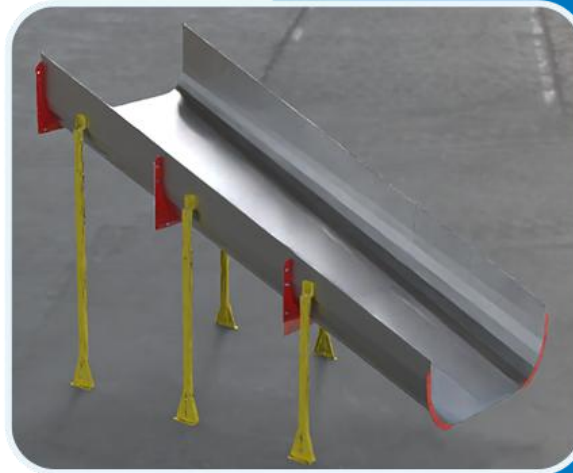
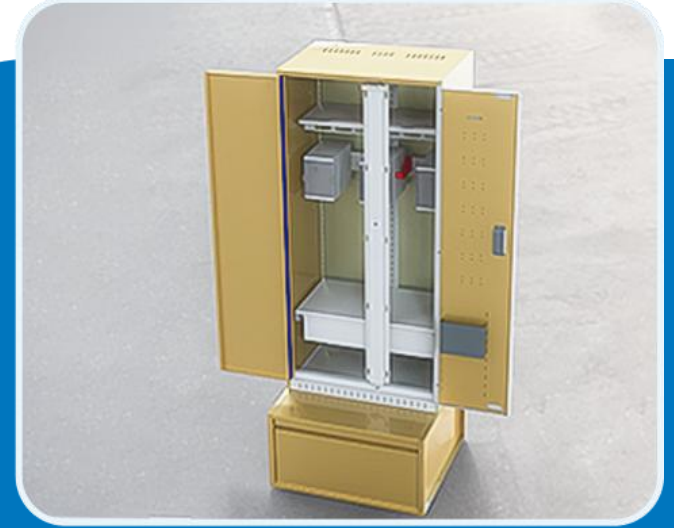
**ASSEMBLY DRAWINGS**

**SHEET METAL DRAWINGS**

**ISOMETRIC DRAWING**

**PARAMETRIC MODELING**

**3D SOLID MODELING**





# INDUSTRIAL PLANT DIGITIZATION

We create intelligent 3D models for site preparation, structural design and detailing, building design, piping and equipment layout. Enhance and integrate multidisciplinary collaboration and minimize data loss across your project.

**LiDAR SCANNING**

**REVERSE ENGINEERING**

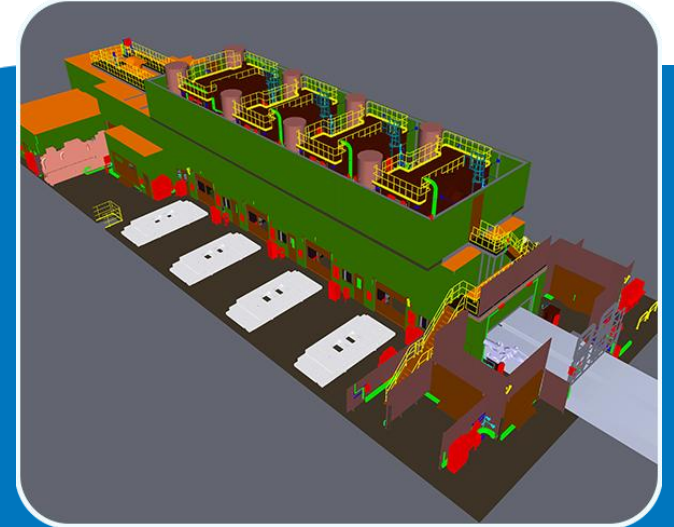
**SCAN TO DWG**

**AS-BUILT DOCUMENTATION**

**3D MODELING**

**LEGENDARY DRAWING**

**P & ID, GA & EQUIPMENT DRAWING**



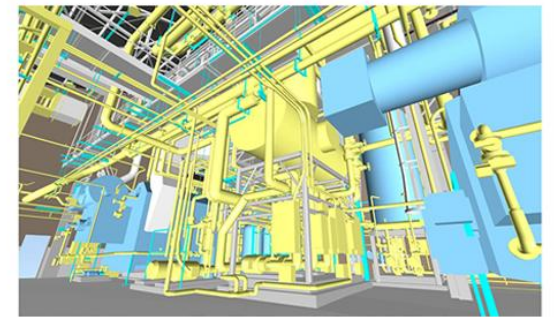
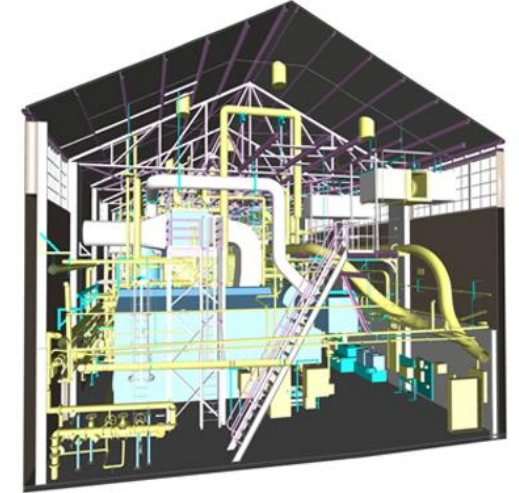
# POINTCLOUD **SCAN TO BIM MODELING**

The 3D BIM model that we create from laser scan data serve as accurate models for as-built purposes as well as for retrofit, refurbishment and renovation projects.

**ARCHITECTURAL CONVERSION**

**STRUCTURAL CONVERSION**

**MEP CONVERSION**





# REVIT FAMILY CREATION

Creation of standard and customized revit families for the retail, manufacturing and the construction industry from the manufacturer's submittals or even hand sketches.

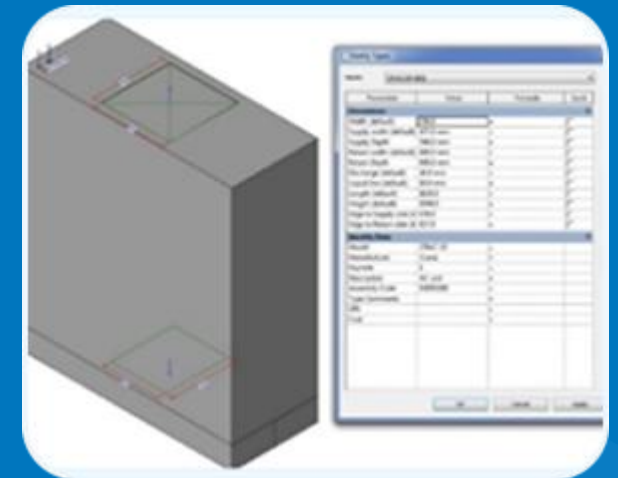
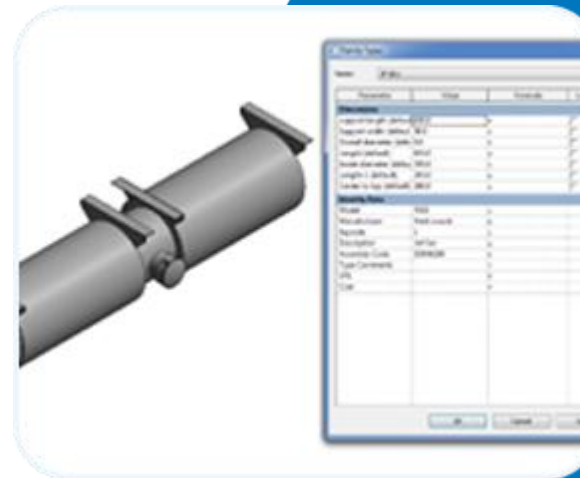
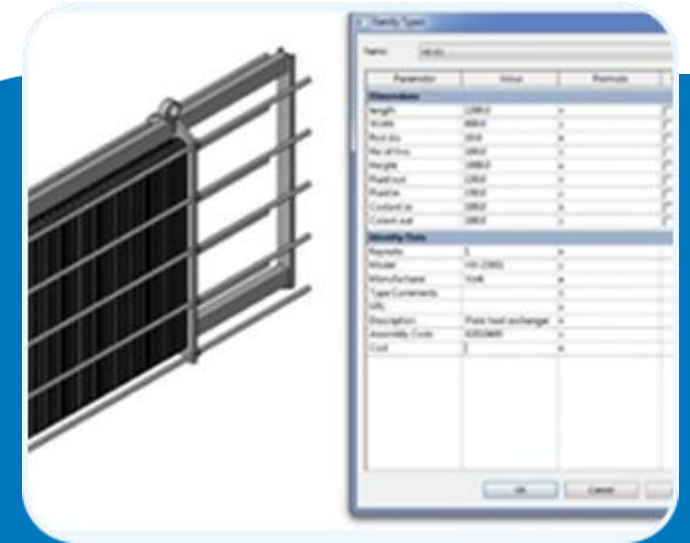
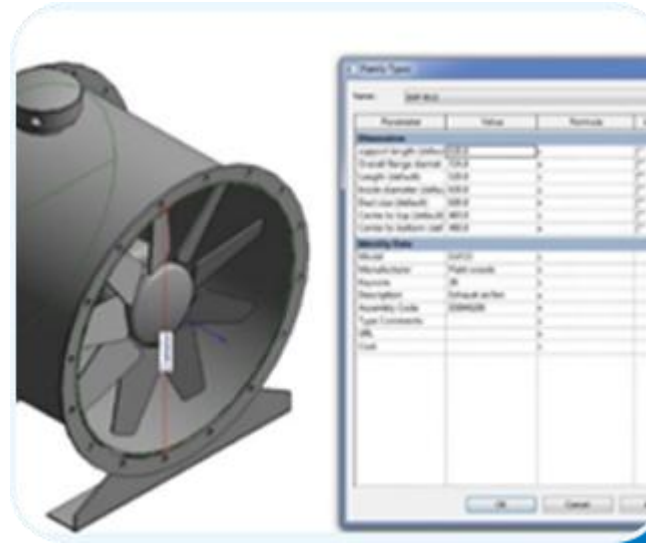
**ARCHITECTURAL ELEMENTS**

**STRUCTURAL COMPONENTS**

**MECHANICAL FITTINGS**

**PLUMBING FIXTURES**

**PRODUCT LIBRARIES**



# BIM CONSULTING SERVICES

Since 2007, we have been assisting construction companies, general & specialty contractors in their migration to BIM from CAD. We act as a strategic BIM partner to the client educating and training them for seamless migration from CAD drafting to BIM implementation.

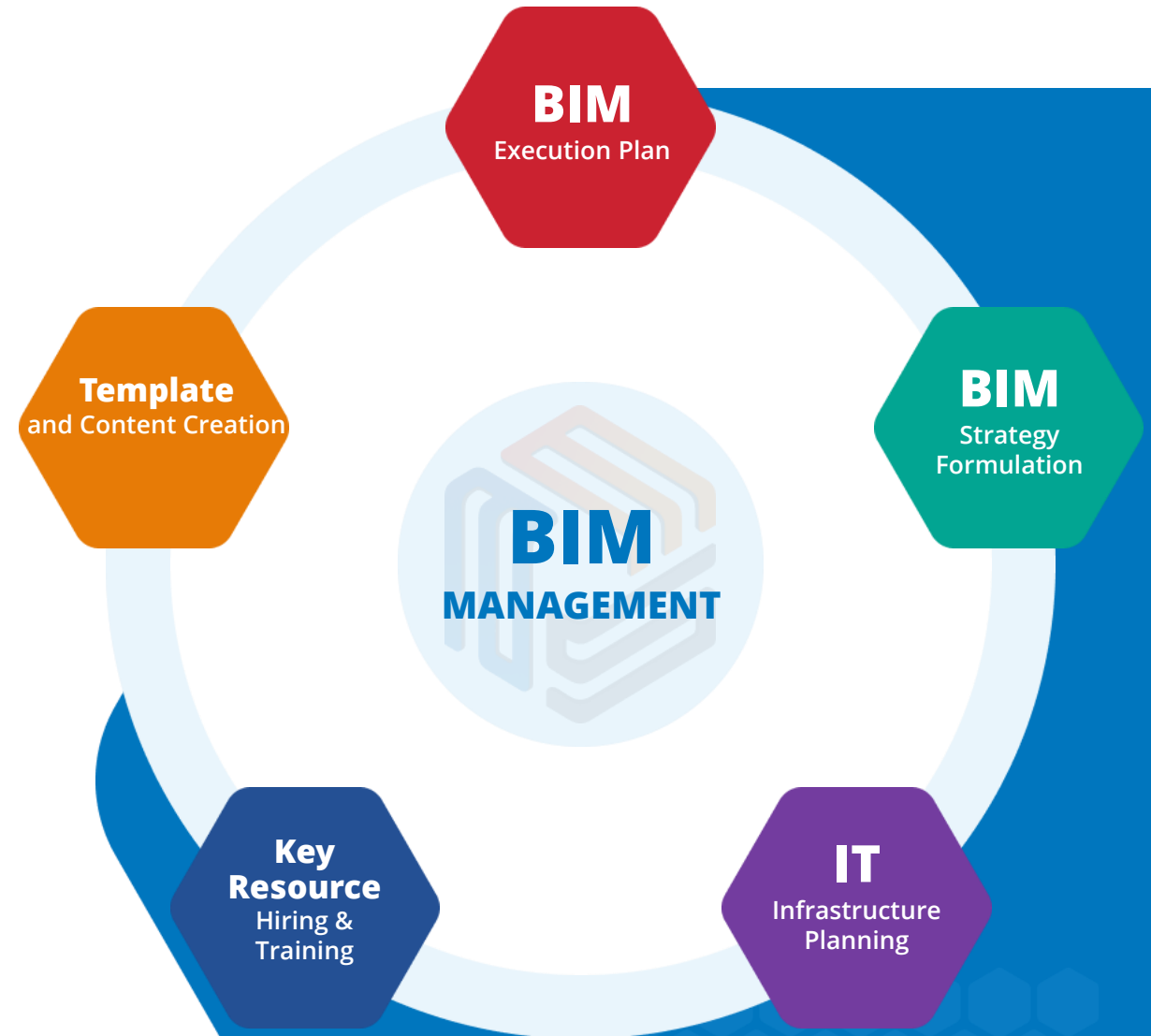
**BIM MODEL AUDIT**

**OFFSHORE BIM TEAM**

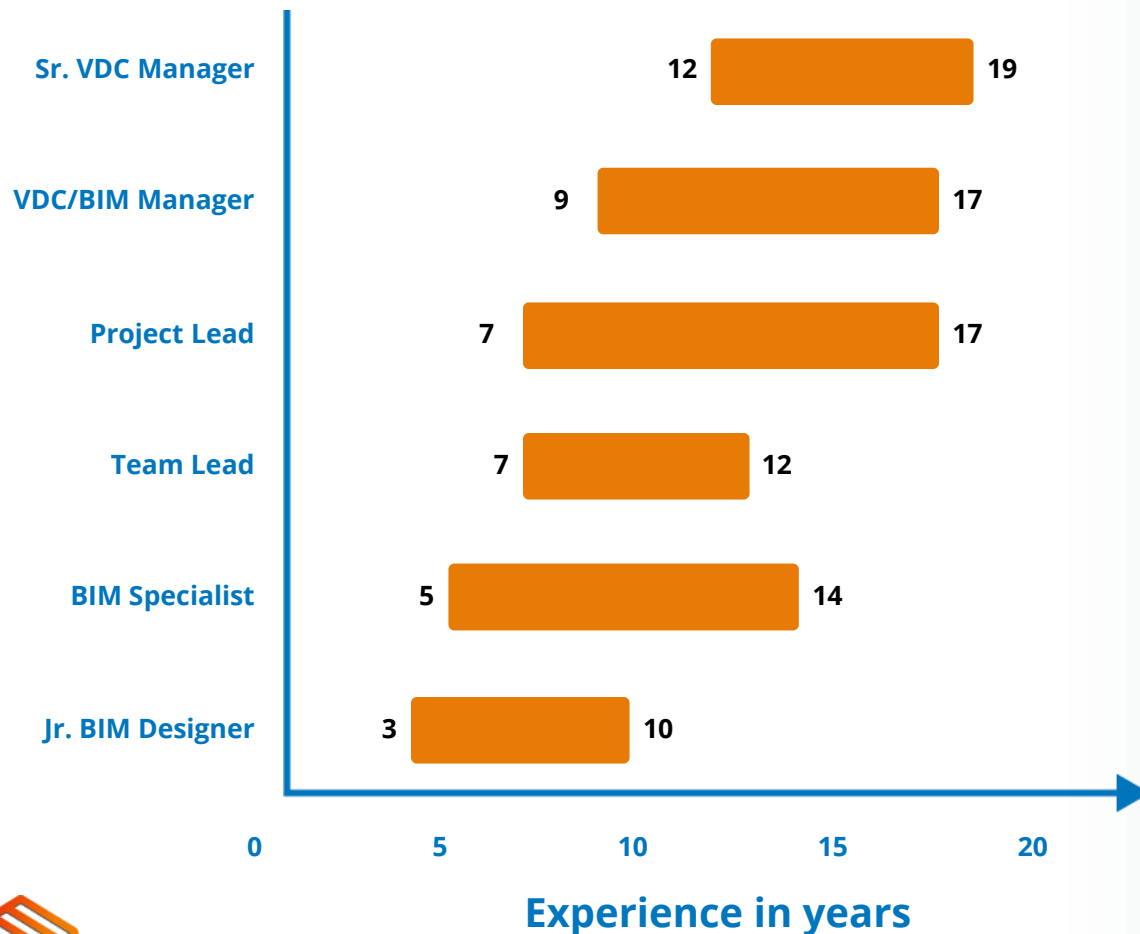
**BIM IMPLEMENTATION PLANNING**

**BIM TRAINING**

**ON-SITE BIM SUPPORT**



# TEAM PROFICIENCY AND SOFTWARE PROFICIENCY



# BIM TRAINING

Advenser offers a comprehensive Building Information Modeling (BIM) training program, designed to equip professionals with industry-relevant skills and expertise.

EXPLORE  
OUR  
COURSES



BIM for  
Beginners



BIM Proficiency  
Training



BIM for Building Utility  
Services



BIM Manager  
Training

BIM for Structural  
Engineering

BIM for Facade  
Engineering

BIM for Steel  
Detailing



# CONTACT US



## USA

Five Neshaminy Interplex, STE 205  
Trevose, PA 19053, USA

Phone: +1 (215) 934 2868

562 Independence Rd, STE 217  
East Stroudsburg, PA 18301, USA

Phone: +1 (215) 934 2868



## UAE

P.O. Box No: 118901,  
Dubai, UAE

Phone: +971 50 237 7430



## INDIA

43 A, E block, 4F CSEZ, Kakkanad  
Kochi, Kerala, India. Pin 682 037

Phone: +91 484 298 8448

403, 4F, Lulu Cyber Tower 1, Infopark  
Kochi, Kerala, India. Pin 682 042

Phone: +91 484 404 0708

7th Floor, Commerce Mantri, 12, 1 & 2,  
Bannerghatta rd, BTM Layout, Bengaluru.  
Pin: 560 076

Phone: +91 890 456 9211



## AUSTRALIA

Unit 26, 14 Jubilee Avenue  
Warriewood NSW 2102, Australia

Phone: +61 363 877 090



## GERMANY

Dr. Ulrich Dietz

Email: [udietz@advenser.net](mailto:udietz@advenser.net)

Phone: +49 7724 915924-0



[www.advenser.com](http://www.advenser.com)



[info@advenser.com](mailto:info@advenser.com)



THANK YOU

