



WHO WE ARE

Established in 2007, Advenser helps construction companies, general contractors, architects & engineers, integrate BIM into their projects seamlessly within their predefined timelines and budget, bridging the gap between concept & constructability.

Mission

To provide services to customers globally with cutting edge technologies and grants cost savings.

Vision

To be recognized as a leading Business Process Outsourcing service provider delivering exemplary services.



OUR CLIENT BASE



ADVENSER DIFFERENTIATORS



Comprehensive Set Of BIM Solutions



System Driven Best Project Practice



State-of-the Art-infrastructure



Refined Quality Assurance Procedure



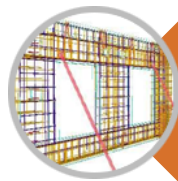
Scalability & Flexibility Of Resources



Qualified & Specialized Resources



OUR PRECAST BIM SERVICES



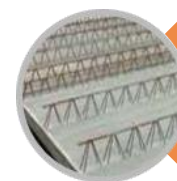
WALL PANEL
DETAILING



BEAM &
COLUMN
DETAILING



ERECTION
LAYOUTS



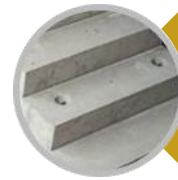
PRECAST SLAB
DETAILING



BAR BENDING
SCHEDULES



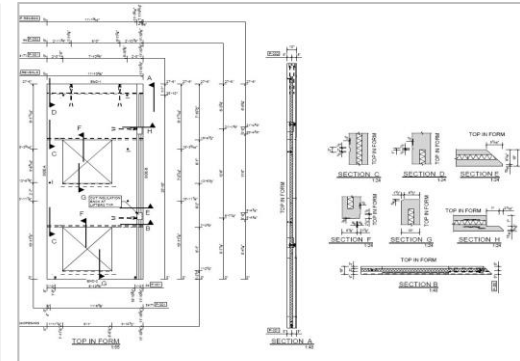
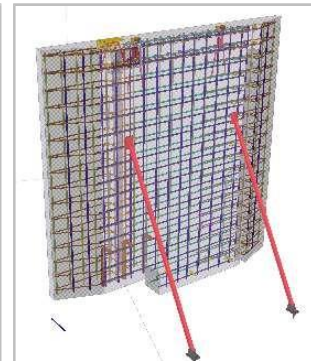
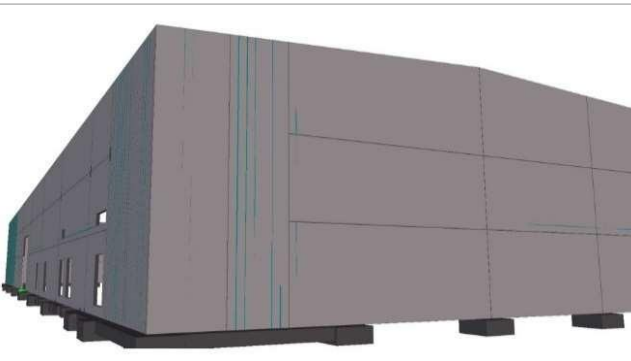
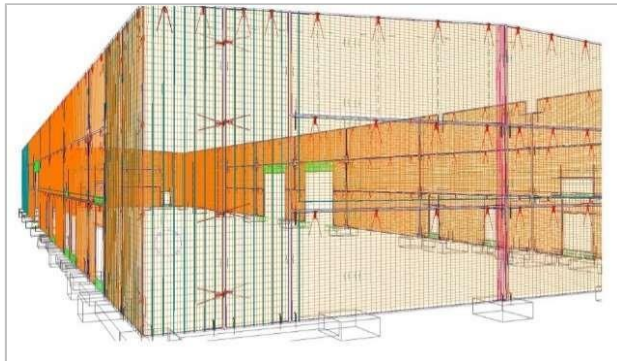
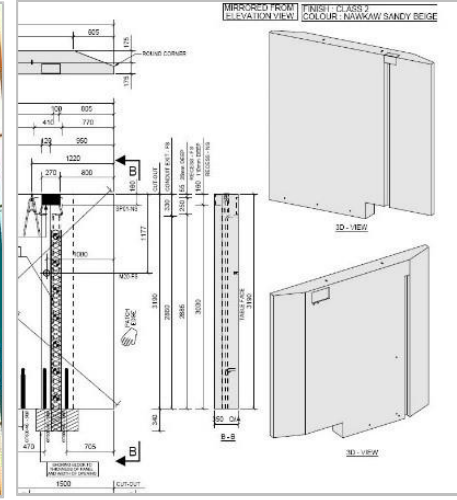
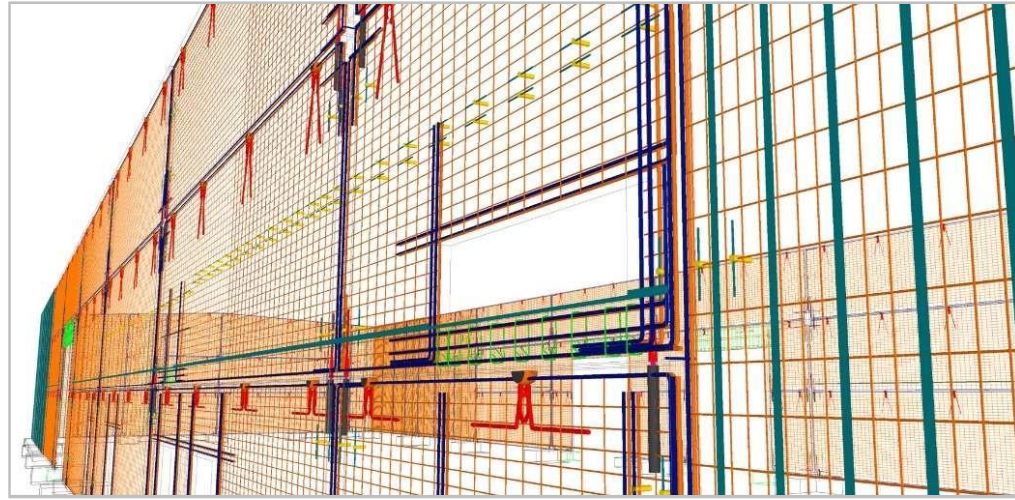
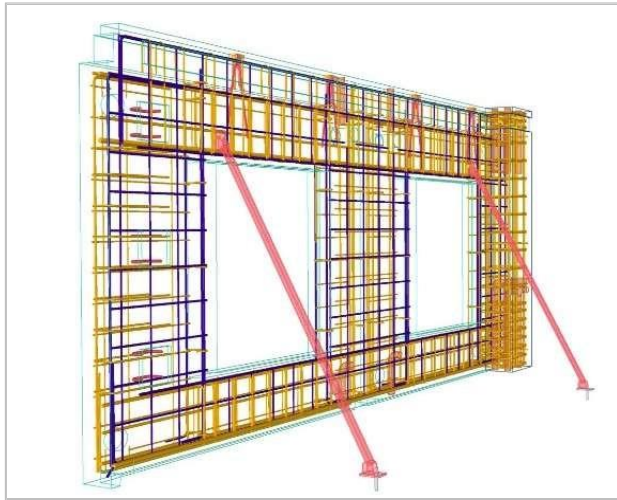
DOUBLE TEE
DETAILING



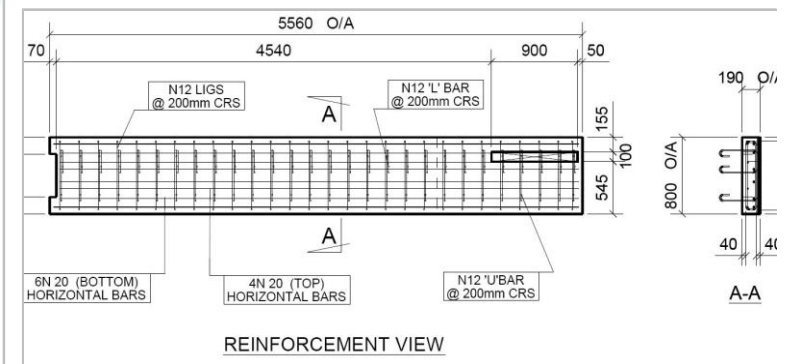
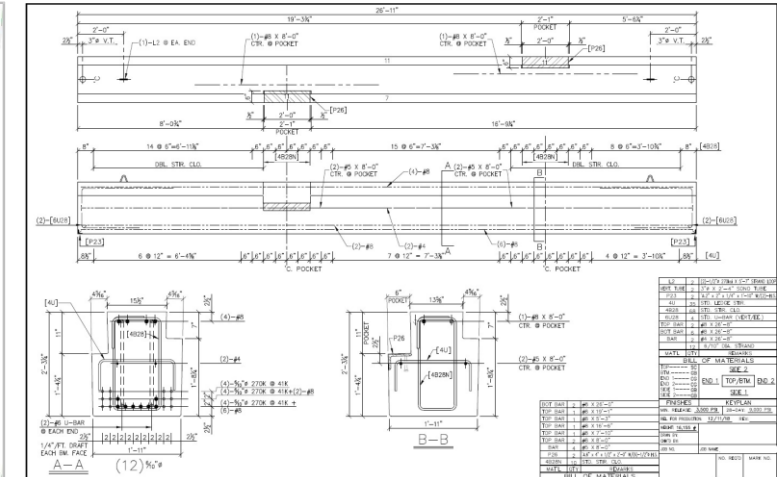
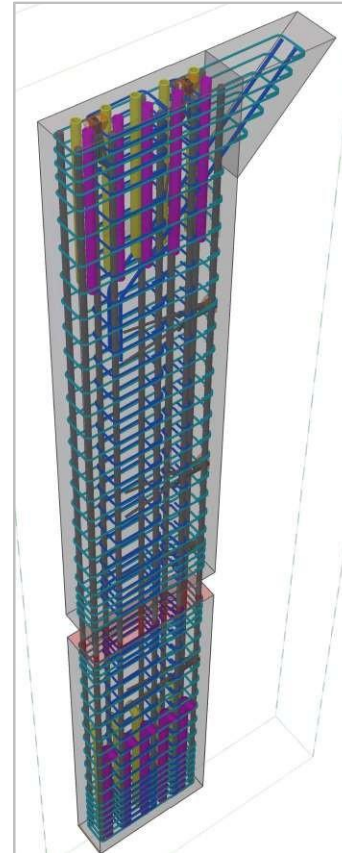
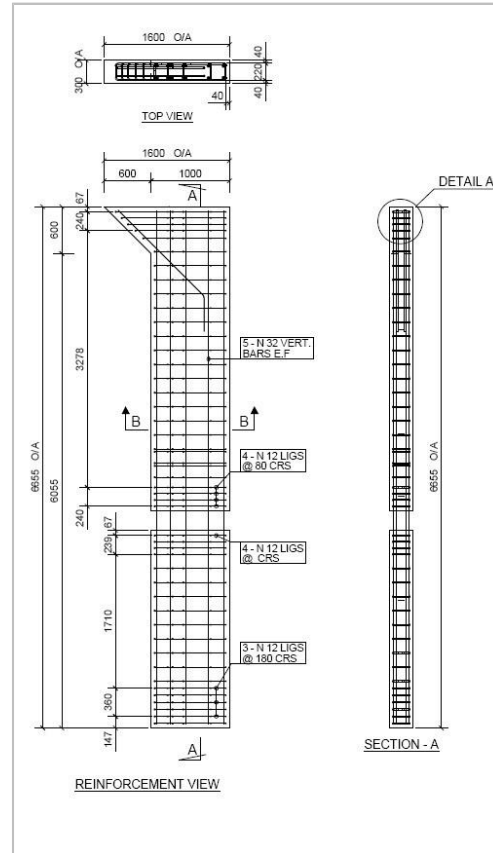
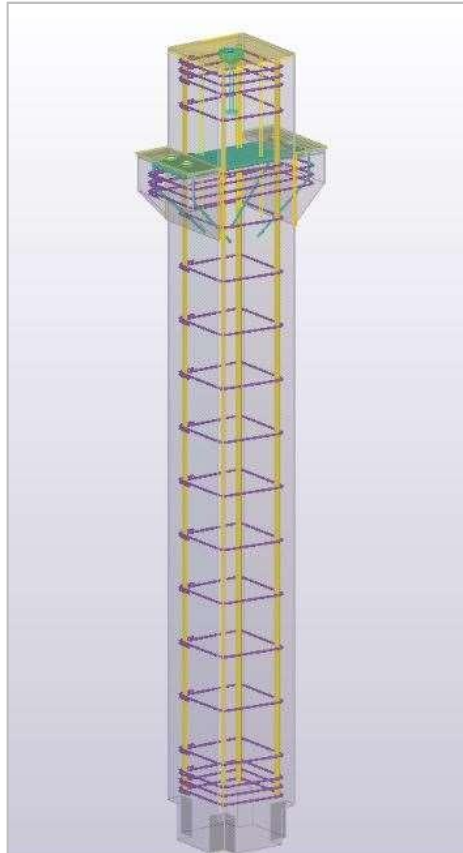
PRECAST STAIR
DETAILING



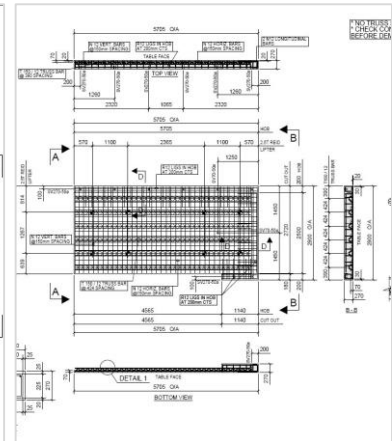
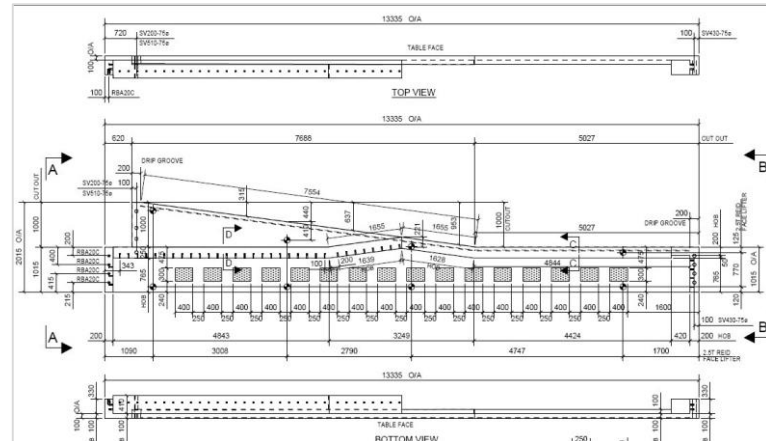
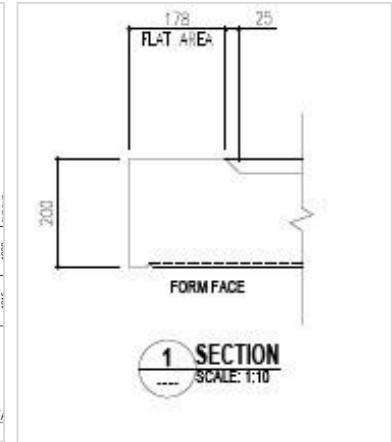
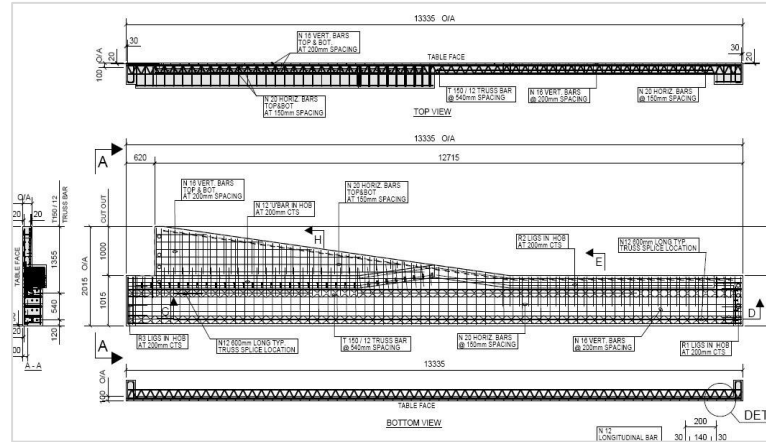
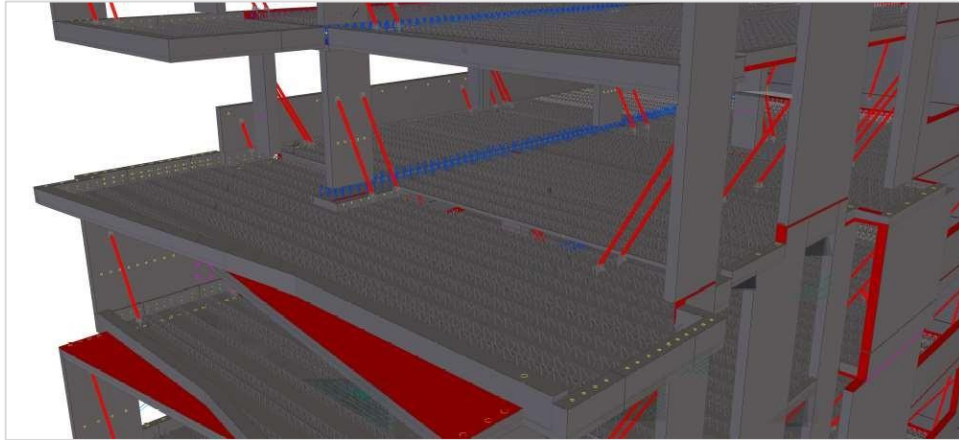
WALL PANEL DETAILING



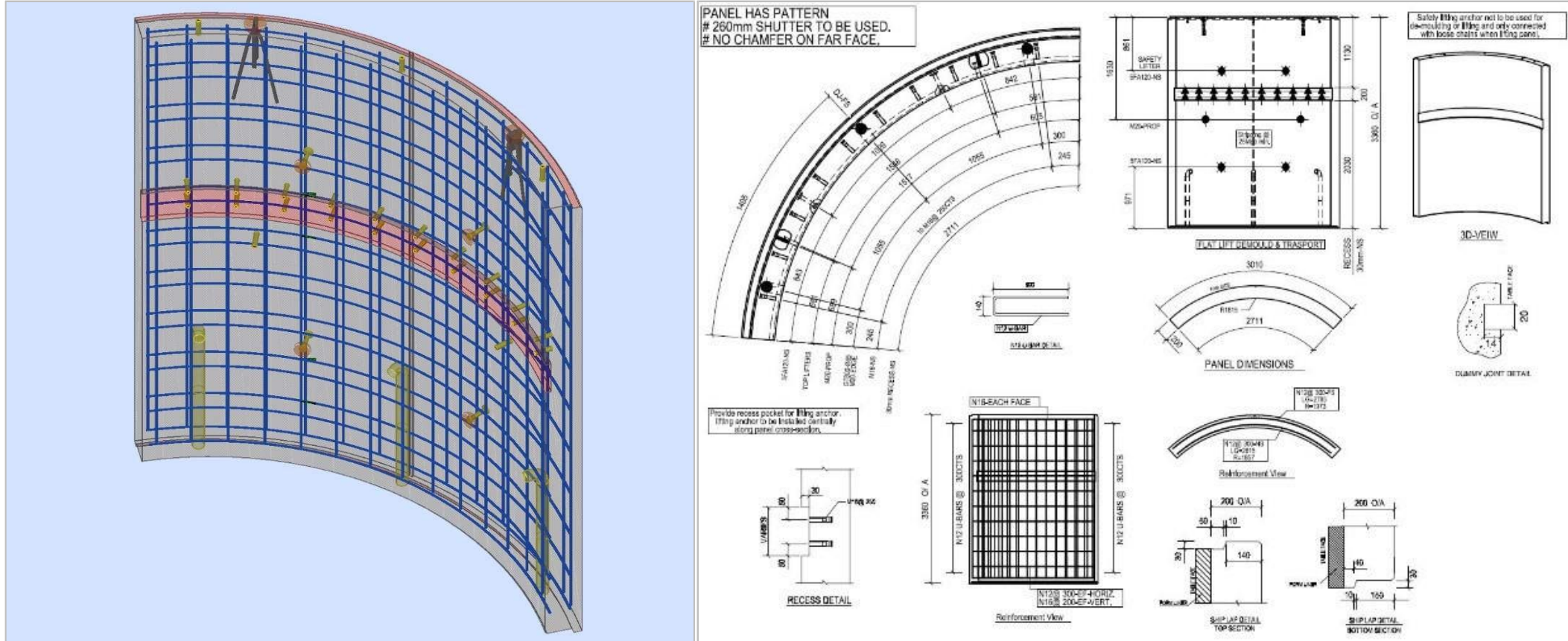
PRECAST BEAM & COLUMN DETAILING



PRECAST SLAB DETAILING



CURVED PANEL SHOP DRAWING



PRECAST STAIR SHOP DRAWING

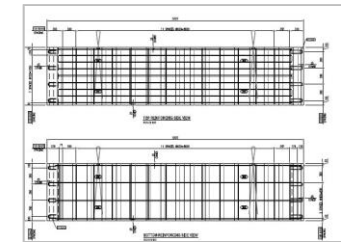
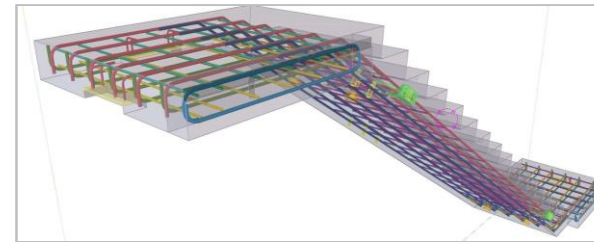
JOB No.	
PANEL No.	S1459
Drawn	1145
Grade	N40
Area (sqm)	1.95
Volume (m ³)	2.26
Weight (kN)	5.92
Panel	

JOB No.	
PANEL No.	S1459
Drawn	1145
Grade	N40
Area (sqm)	1.95
Volume (m ³)	2.26
Weight (kN)	5.92
Panel	

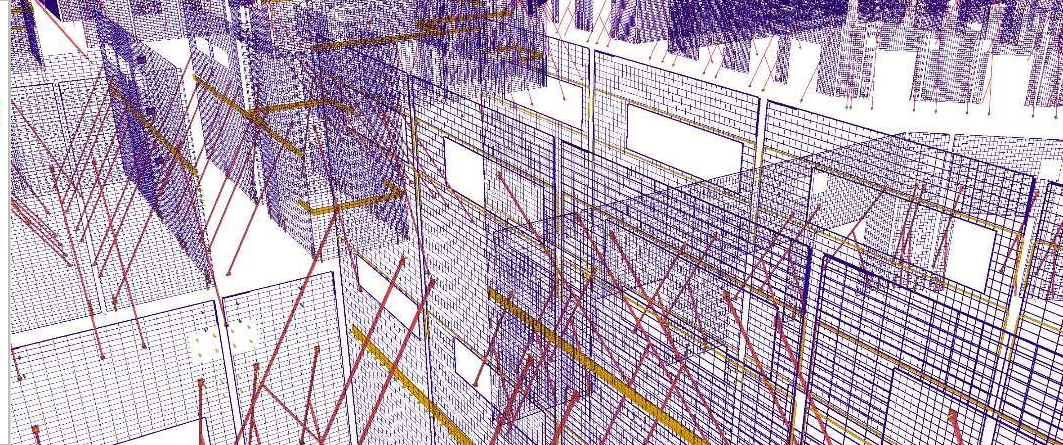
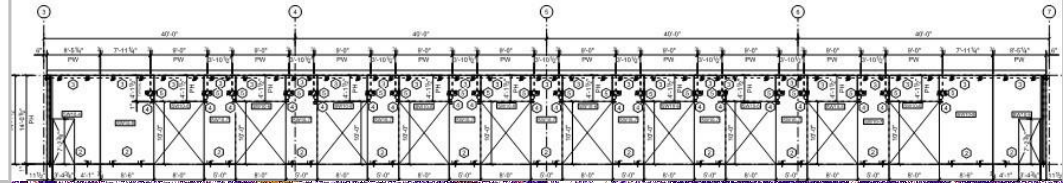
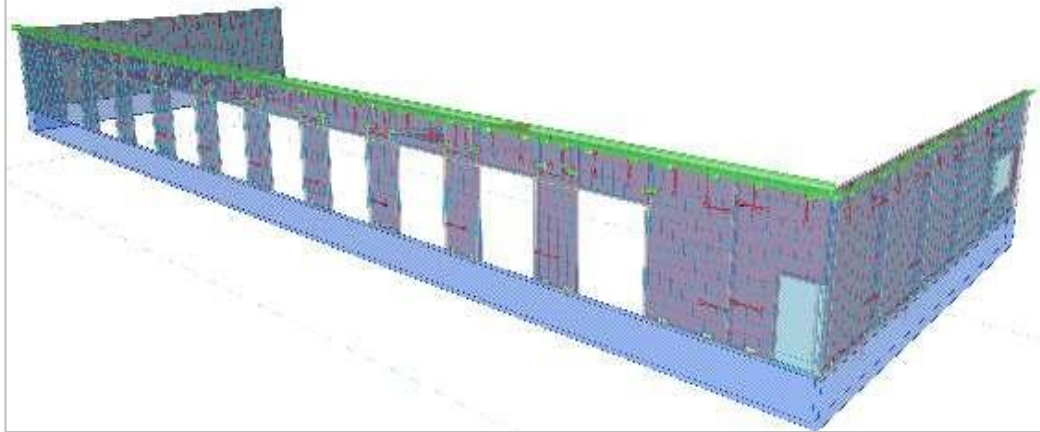
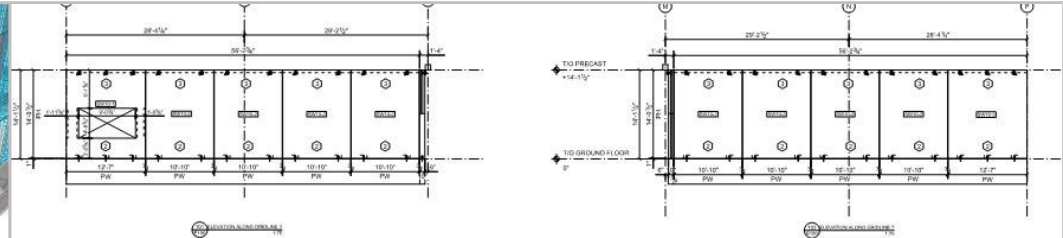
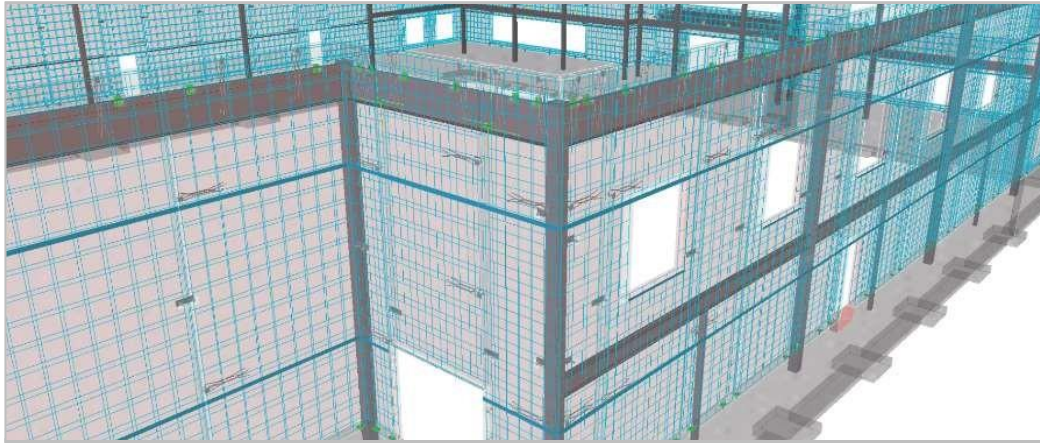
Type	Name	Shape	Dia	Orientation	Length	Qty	Weight
L502	REBAR	[Symbol]	8	N40	5814	11.03	11.03
N604	REBAR	[Symbol]	8	N40	1674	3.71	3.71
N303	REBAR	[Symbol]	8	N40	2034	3.30	3.30
N601	REBAR	[Symbol]	8	N40	1075	0.96	1.96
N305	REBAR	[Symbol]	8	N40	1575	0.96	1.96
N602	REBAR	[Symbol]	8	N40	1155	0.95	2.02
T207	REBAR	[Symbol]	2	N40	2440	0.95	1.90
V304	REBAR	[Symbol]	8	N40	3355	3.24	6.54
N524	REBAR	[Symbol]	8	N40	2155	3.41	3.41
S11	ANCHORAGE	[Symbol]	8	N40	200	0.10	1.12
Total Weight:							43.47 kN

JOB No.	
PANEL No.	S1459
Drawn	1145
Grade	N40
Area (sqm)	1.95
Volume (m ³)	2.26
Weight (kN)	5.92
Panel	

JOB No.	
PANEL No.	S1459
Drawn	1145
Grade	N40
Area (sqm)	1.95
Volume (m ³)	2.26
Weight (kN)	5.92
Panel	

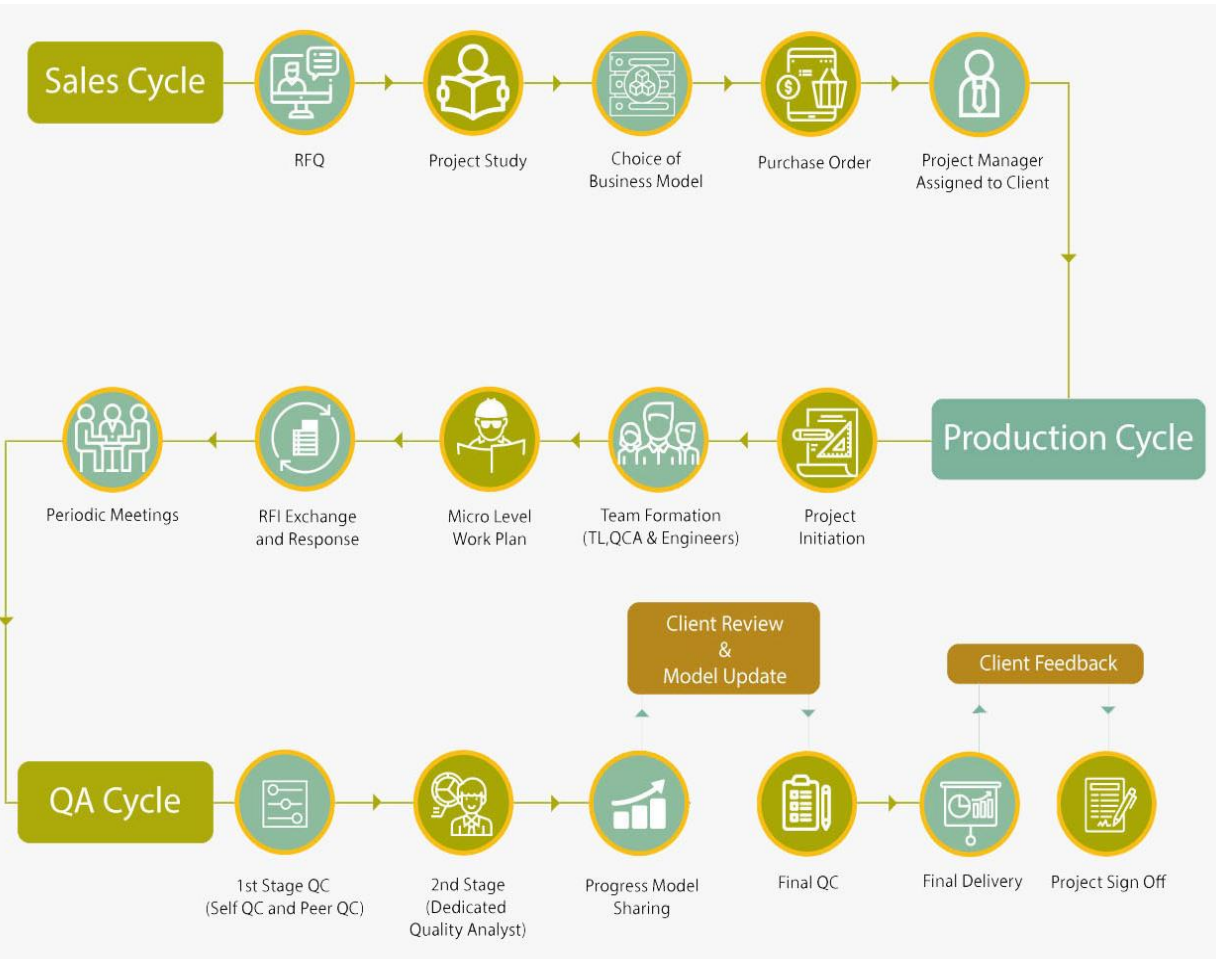


ERECTION LAYOUT DRAWING



OUR DETAILING PROCEDURE

OUR APPROACH



Understanding Client Requirements: With every client, we understand that a different approach may need to be employed with every project, bringing a new set of skills and technology to the table. We devote the time needed to study the objective of the project.

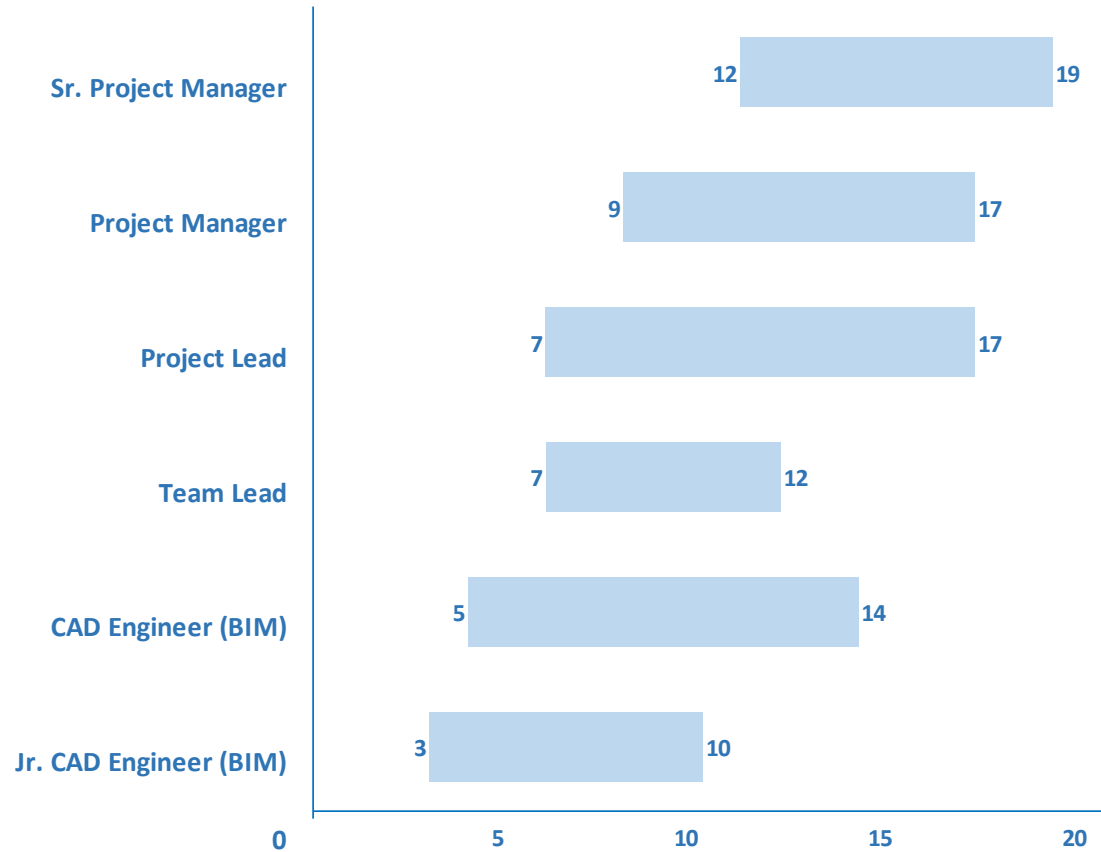
Delivering Solutions: To achieve the goals of the project, our engineers adopt the most appropriate methods, outdoing themselves. Our work is to follow a system driven process incorporating the latest methods in the BIM industry which ensures projects are delivered on time and are nothing short of the highest quality..

Constant Improvement: The engineering team, led by highly capable and seasoned project managers tirelessly learn, research and update themselves to meet the ever-changing and dynamic demands of the AEC industry. Systematic knowledge sharing and perfection of the work process is an ongoing process in Advenser. With every project, we see to it that we always make room for innovation.

Our Promise: Client satisfaction is a promise we assure and we measure our successes on par with that of our client's. We take pride in our past glory & achievements but at the same time strive to make them nothing more than mere milestones in our pursuit of excellence.



TEAM PROFICIENCY & SOFTWARE PROFICIENCY



Tekla



AutoCAD



BIM 360



AutoCAD 360 PRO



Revit Suite

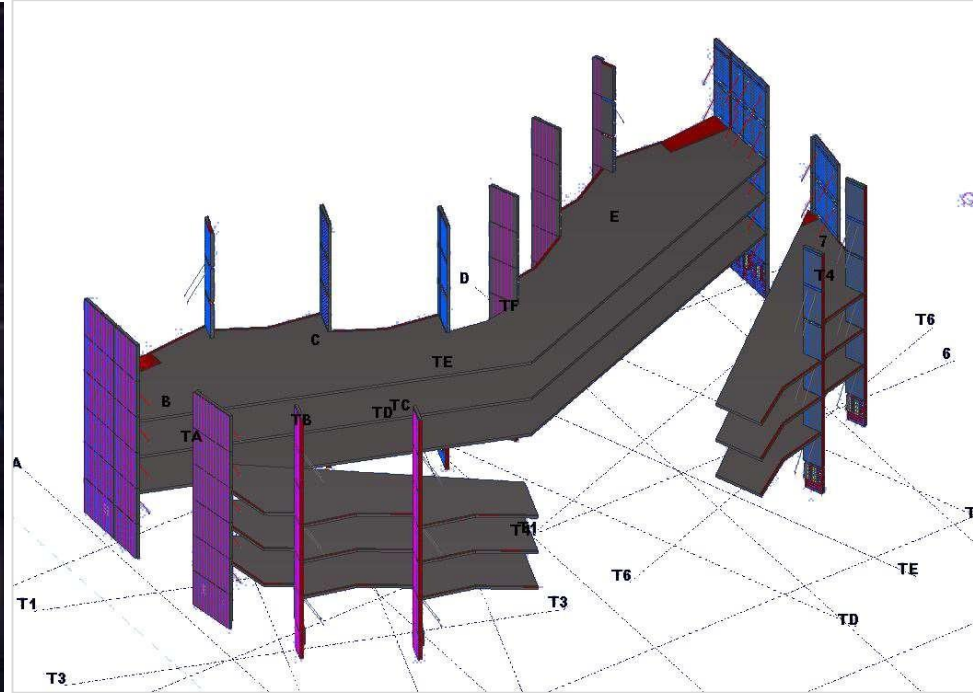


Navisworks Manage



FEATURED PROJECTS

111 Mary Street



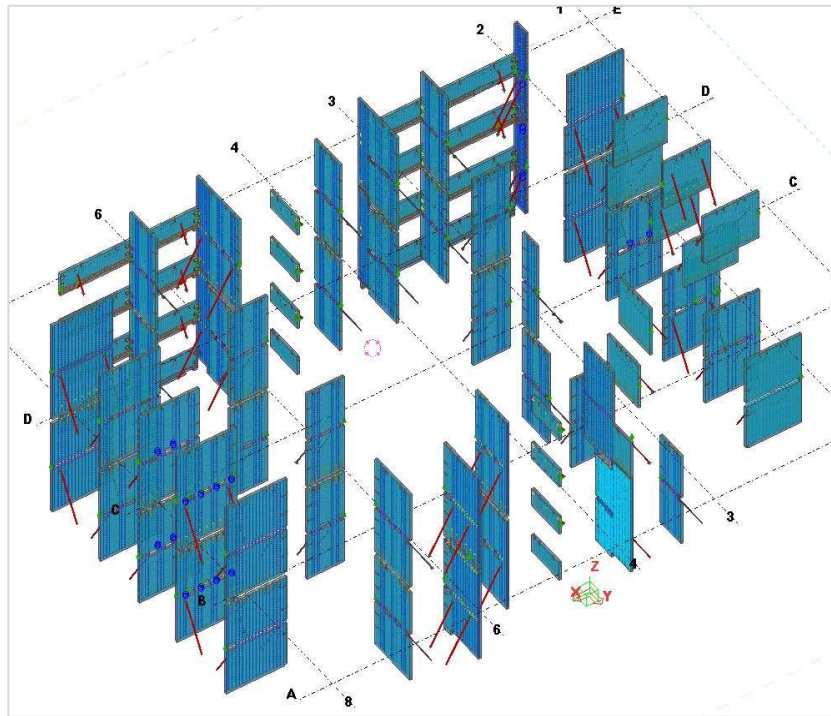
FEATURED PROJECTS

ICON-Christie Street



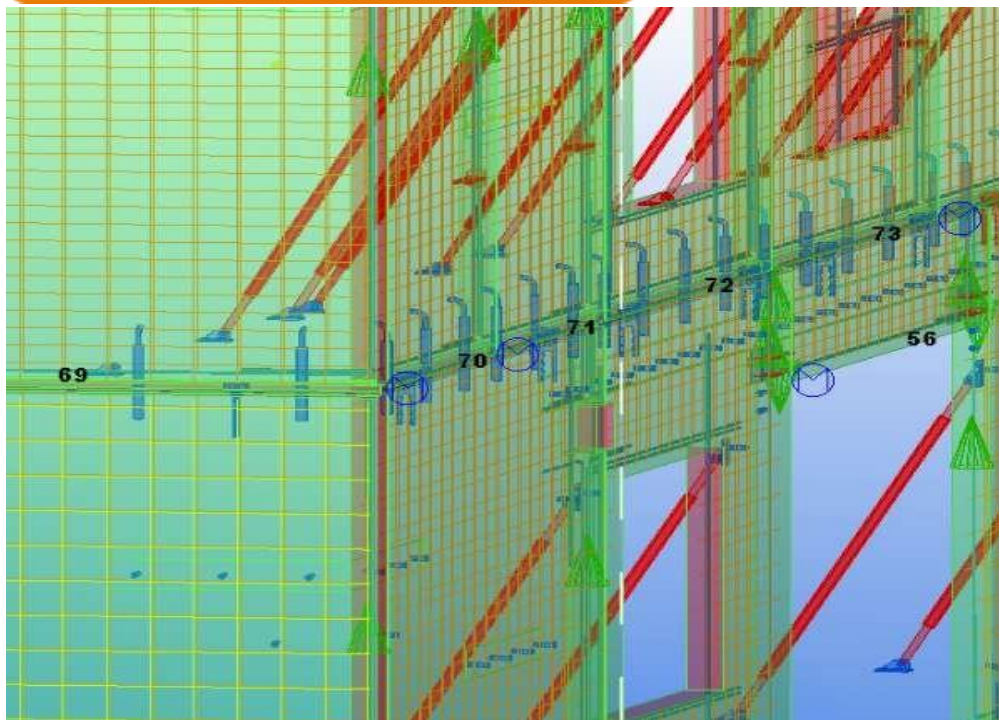
FEATURED PROJECTS

Newstead Tower



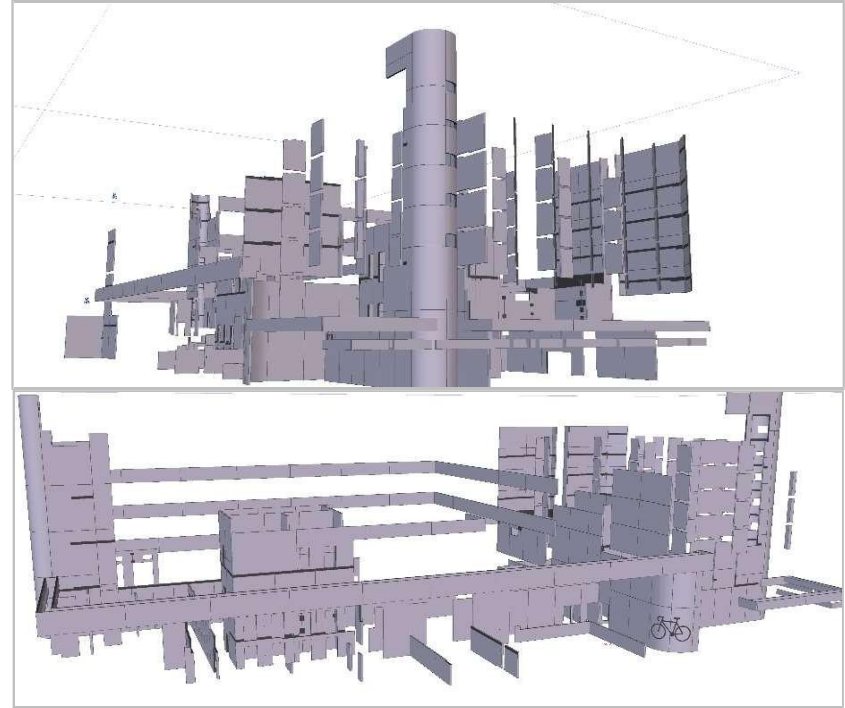
FEATURED PROJECTS

Hing Loon Apartment



FEATURED PROJECTS

Curtin University



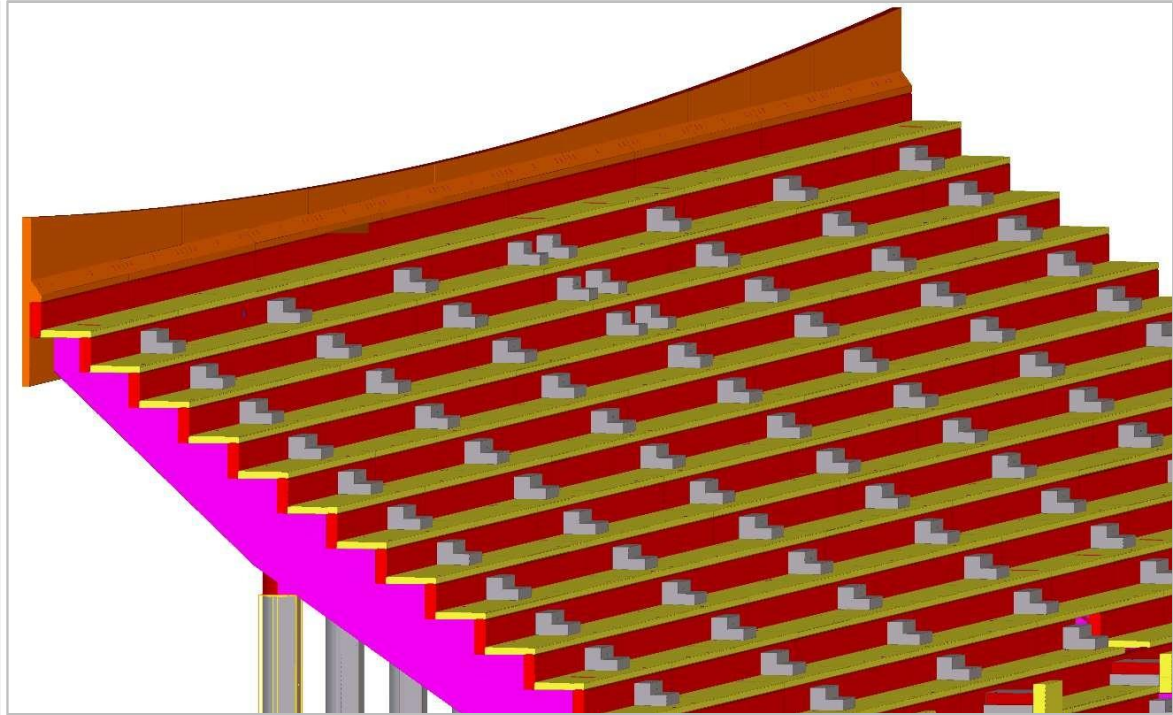
FEATURED PROJECTS

Warehouse Structure



FEATURED PROJECTS

Wollongong Stadium, Australia



CONTACT US



Advenser Technology Services, Inc.

Five Neshaminy Interplex, STE 205
Trevose, PA 19053, USA

Phone: +1 (215) 791 7955



Advenser LLC

Five Neshaminy Interplex, STE 205
Trevose, PA 19053, USA

Phone: +1 (215) 934 2868



Advenser Engineering Services Pvt. Ltd.

43 A, E block, 4F CSEZ, Kakkanad
Kochi, Kerala, India. Pin 682 037

Phone: +91 484 298 8448



Advenser Engineering Systems LLC

P.O. Box No: 118901,
Dubai, UAE

Phone: +971 50 237 7430



Advenser Engineering Services Pty. Ltd.

Unit 26, 14 Jubilee Avenue
Warriewood NSW 2102, Australia

Phone: +61 363 877 090



Advenser Engineering Services Pvt. Ltd.

403, 4F, Lulu Cyber Tower 1, Infopark
Kochi, Kerala, India. Pin 682 042

Phone: +91 484 404 0708



www.advenser.com



info@advenser.com



THANK YOU

