



INDUSTRIAL ENGINEERING BIM SERVICES



WHO WE ARE

Established in 2007, Advenser helps construction companies, general contractors, architects & engineers, integrate BIM into their projects seamlessly within their predefined timelines and budget, bridging the gap between concept & constructability.

Mission

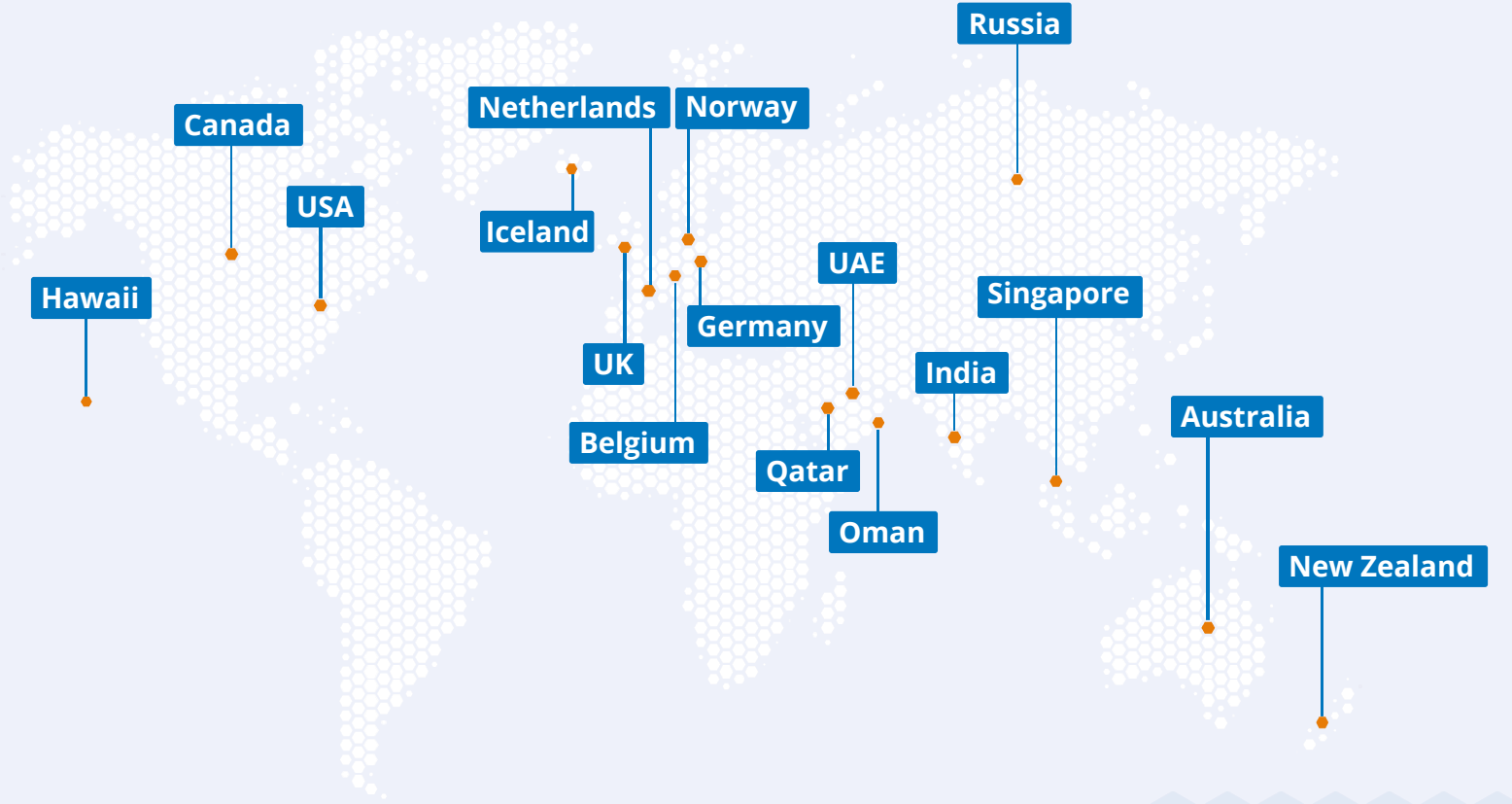
To provide services to customers globally with cutting edge technologies and guarantees cost savings.

Vision

To be recognized as a leading Business Process Outsourcing service provider delivering exemplary services.



OUR CLIENT BASE



ADVENSER DIFFERENTIATORS



Comprehensive Set Of BIM Solutions



System Driven Best Project Practice



State-of-the Art-infrastructure



Refined Quality Assurance Procedure



Scalability & Flexibility Of Resources



Qualified & Specialized Resources



INDUSTRIAL ENGINEERING BIM SERVICES



BIM Coordination



Process Piping Drawings



3D BIM Modeling



Shop Drawings



Point Cloud to BIM Conversion



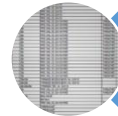
Process Schematic Diagram



GA & Equipment Layout



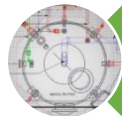
Structural 3D Modeling Services



Bill of Materials



As-Built Documentation



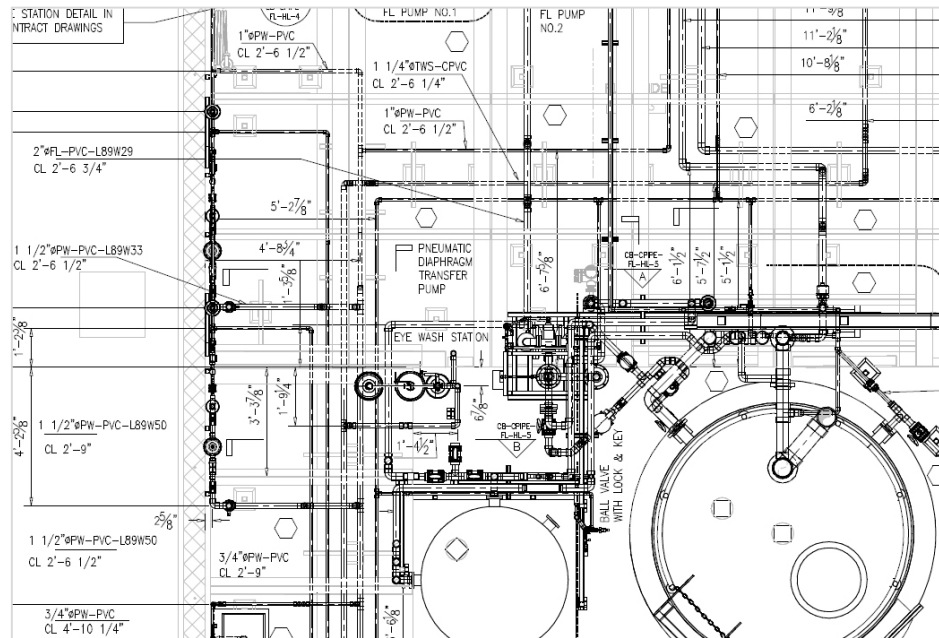
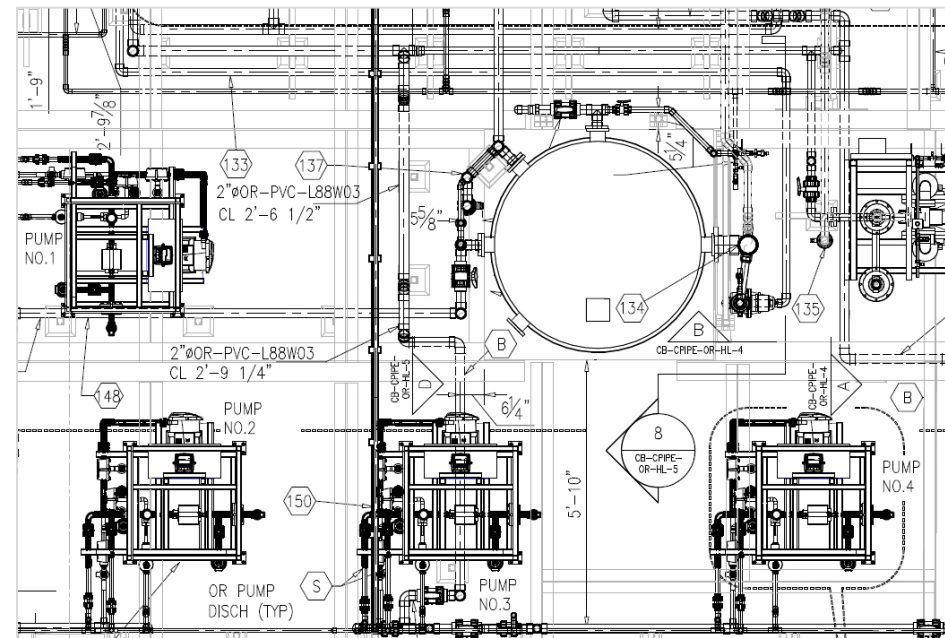
Spool and Fabrication Drawings



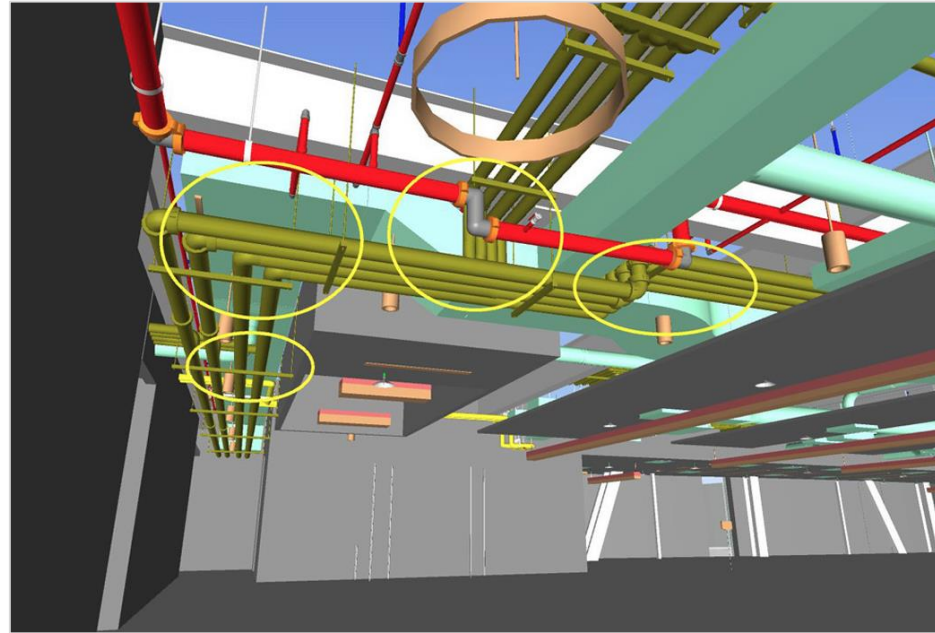
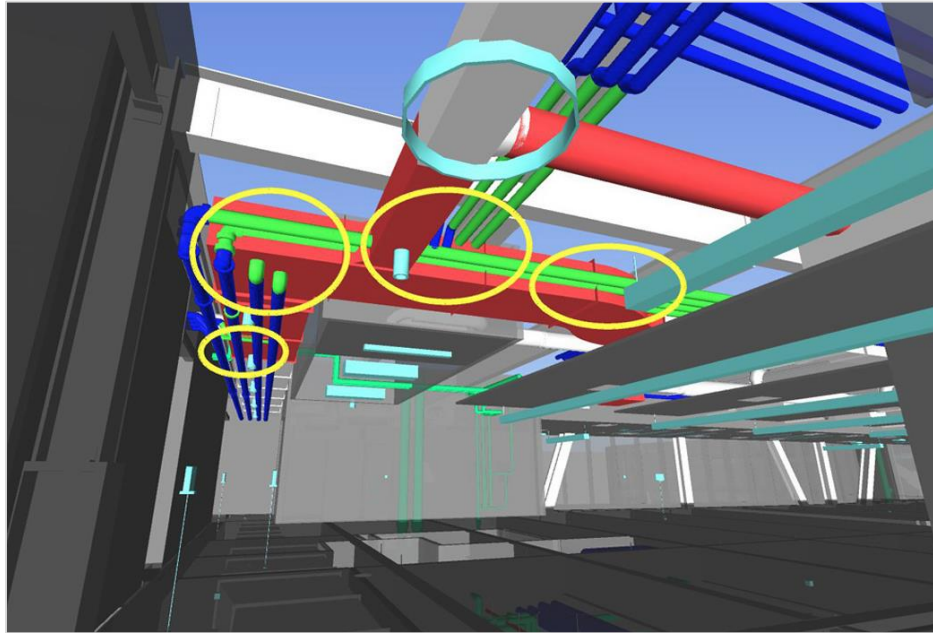
P & ID Diagrams



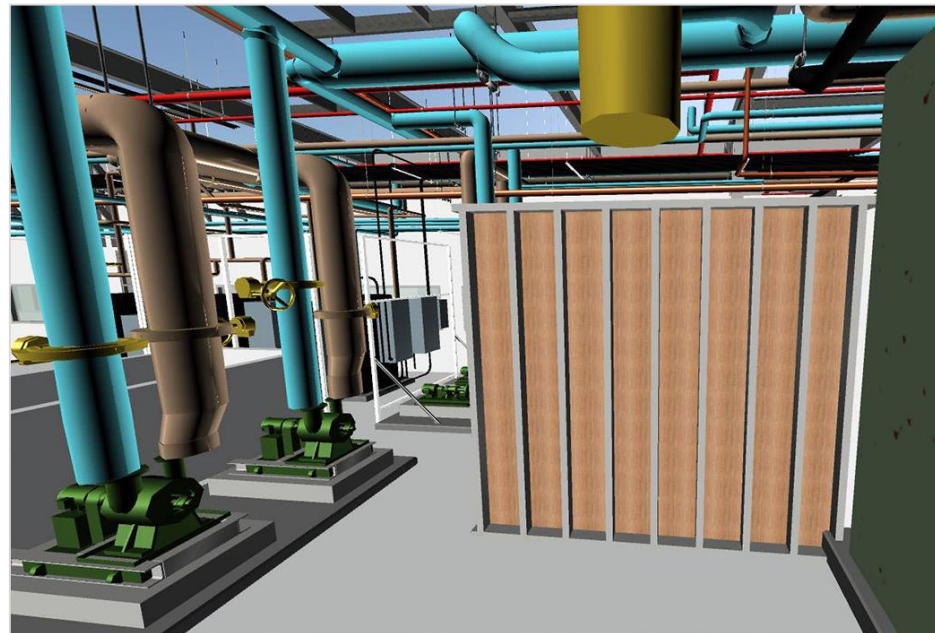
SHOP DRAWINGS



BIM COORDINATION

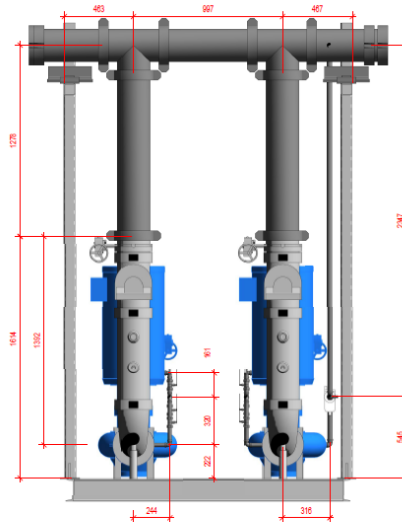
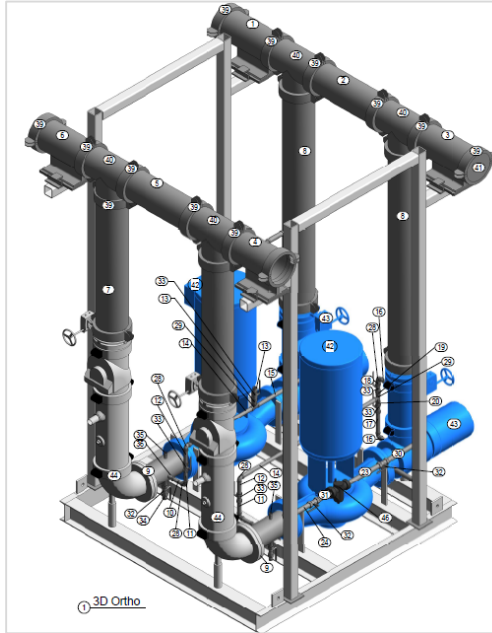


POINT CLOUD TO BIM CONVERSION



Service Provider Select

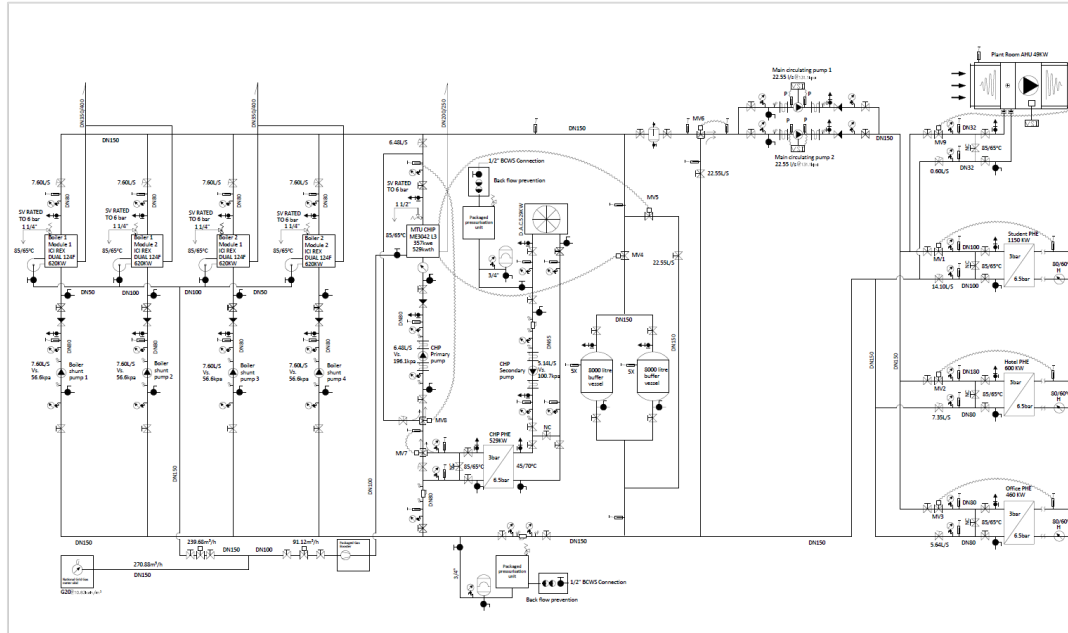
BILL OF MATERIALS



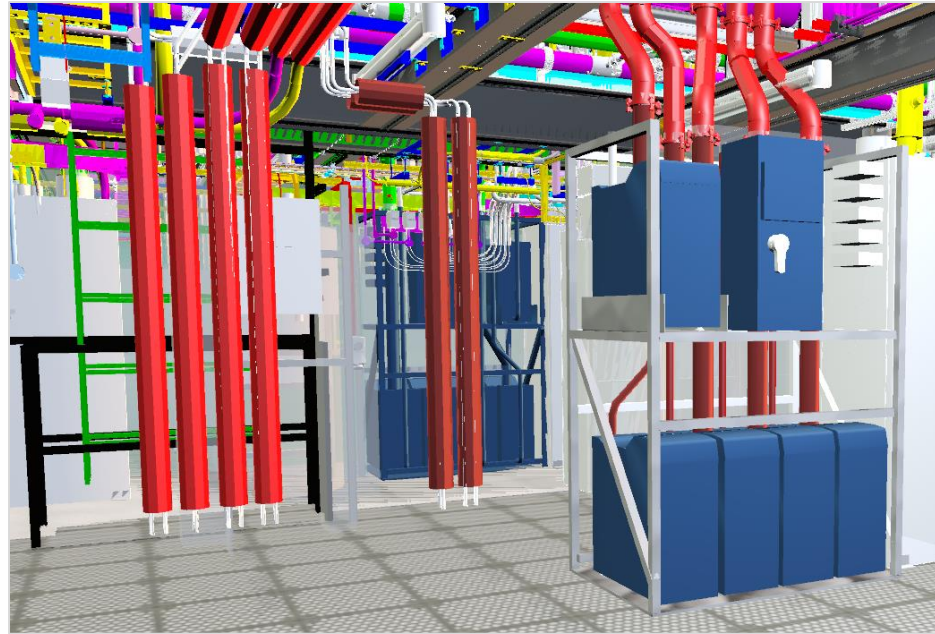
| MEP Fabrication Pipework Schedule | | | | | | |
|-----------------------------------|----------------|--|-----------|-------------|-----|---|
| Mark | Size | Description | End Prep | Length (mm) | Qty | |
| 1 | 200e | PIPE 316L SS SCH 10 | GWGV | 450 | 1 | |
| 2 | 200e | PIPE 316L SS SCH 10 | GWGV | 562 | 1 | |
| 3 | 200e | PIPE 316L SS SCH 10 | GWGV | 465 | 1 | |
| 4 | 200e | PIPE 316L SS SCH 10 | GWGV | 374 | 1 | |
| 5 | 200e | PIPE 316L SS SCH 10 | GWGV | 562 | 1 | |
| 6 | 200e | PIPE 316L SS SCH 10 | GWGV | 437 | 1 | |
| 7 | 200e | PIPE 316L SS SCH 10 | GWGV | 1070 | 2 | |
| 8 | 200e | PIPE 316L SS SCH 10 | GWGV | 1718 | 2 | |
| 9 | 150e | PIPE 316L SS SCH 10 | BWBW | 372 | 2 | |
| 10 | 20e | PIPE 316L SS SCH 10-THRD | THRD/THRD | 108 | 2 | |
| 11 | 20e | PIPE 316L SS SCH 10-THRD | THRD/THRD | 118 | 2 | |
| 12 | 20e | PIPE 316L SS SCH 10-THRD | THRD/THRD | 126 | 2 | |
| 13 | 20e | PIPE 316L SS SCH 10-THRD | THRD/THRD | 50 | 4 | |
| 14 | 20e | PIPE 316L SS SCH 10-THRD | THRD/THRD | 618 | 2 | |
| 15 | 20e | PIPE 316L SS SCH 10-THRD | THRD/THRD | 619 | 2 | |
| 16 | 20e | PIPE 316L SS SCH 10-THRD | THRD/THRD | 112 | 4 | |
| 17 | 20e | PIPE 316L SS SCH 10-THRD | THRD/THRD | 169 | 2 | |
| 18 | 20e | PIPE 316L SS SCH 10-THRD | THRD/THRD | 42 | 2 | |
| 19 | 20e | PIPE 316L SS SCH 10-THRD | THRD/THRD | 43 | 2 | |
| 20 | 20e | PIPE 316L SS SCH 10-THRD | THRD/THRD | 45 | 2 | |
| 21 | 25e | PIPE 316L SS SCH 10-THRD | THRD/THRD | 225 | 1 | |
| 22 | 25e | PIPE 316L SS SCH 10-THRD | THRD/THRD | 251 | 1 | |
| 23 | 25e | PIPE 316L SS SCH 10-THRD | THRD/THRD | 315 | 1 | |
| 24 | 25e | PIPE 316L SS SCH 10-THRD | THRD/THRD | 220 | 1 | |
| 25 | 25e | PIPE 316L SS SCH 10-THRD | THRD/THRD | 2305 | 1 | |
| 26 | 25e | PIPE 316L SS SCH 10-THRD | THRD/THRD | 154 | 1 | |
| 27 | 25e-25e | THREADED DES ELBOW-SS-SCH 10 | | | 4 | |
| 28 | 20e-20e | THREADED W DES ELBOW-SS-SCH 10 | | | 8 | |
| 29 | 20e-20e-20e | THREADED TEE-SS-SCH 10 | | | 34 | 4 |
| 30 | 25e | PIPE 316L SS SCH 10-THRD | THRD/THRD | 267 | 1 | |
| 31 | 25e | PIPE 316L SS SCH 10-THRD | THRD/THRD | 126 | 1 | |
| 32 | 25e-25e | BALL VALVE | | 42 | 4 | |
| 33 | 20e-20e | BALL VALVE | | 35 | 8 | |
| 34 | 25e | PIPE 316L SS SCH 10-THRD | THRD/THRD | 48 | 4 | |
| 35 | 150e-15e | THREAD-OLET | | 125 | 2 | |
| 36 | 150e-20e | THREAD-OLET | | 125 | 2 | |
| 37 | 200e-25e | THREAD-OLET | | 150 | 1 | |
| 38 | 150e-25e | THREAD-OLET | | 125 | 2 | |
| 39 | 200e-200e | VC QUICKVIC COUPLING STYLE 107N (RIGID) | | 67 | 20 | |
| 40 | 200e-200e-200e | VC TEE SS | | 396 | 4 | |
| 41 | 200e | VC END CAP SS | | | 2 | |
| 42 | | P.PRP.LP4.03.04 | | | 2 | |
| 43 | 200e-150e | VC IPS SUCTION VIBRATION ISOLATION PUMP DROP S/381 | | | 2 | |
| 44 | 200e-150e | VC IPS DISCHARGE VIBRATION ISOLATION PUMP DROP S/380 | | | 2 | |



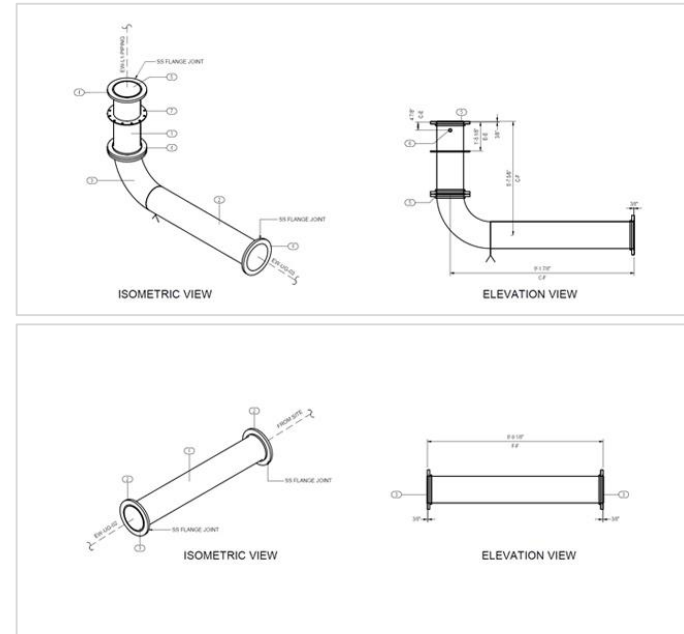
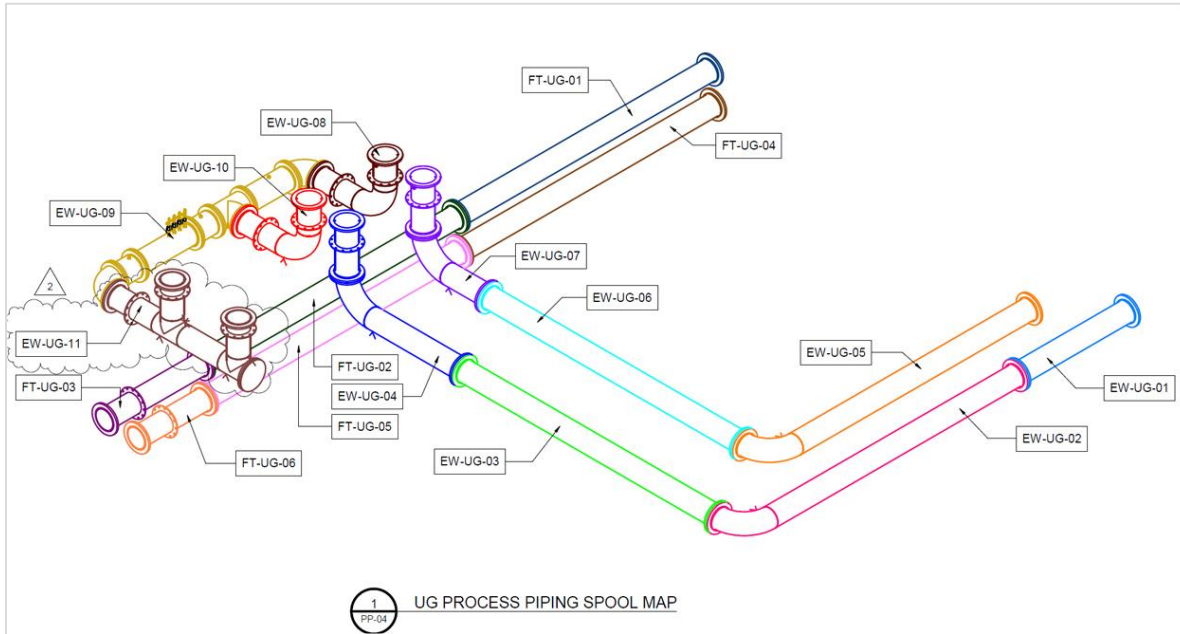
P & I DIAGRAM



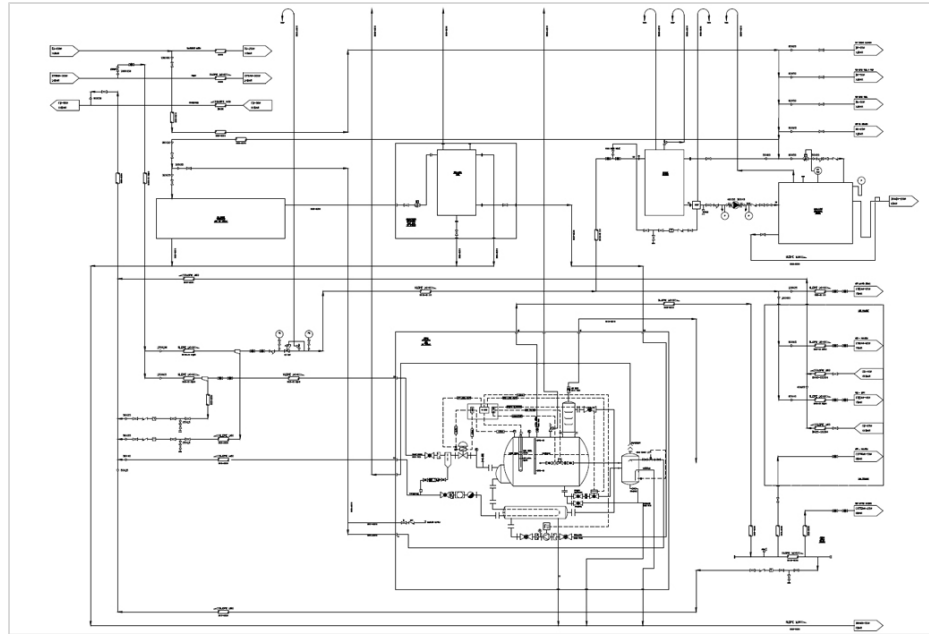
3D MODELING



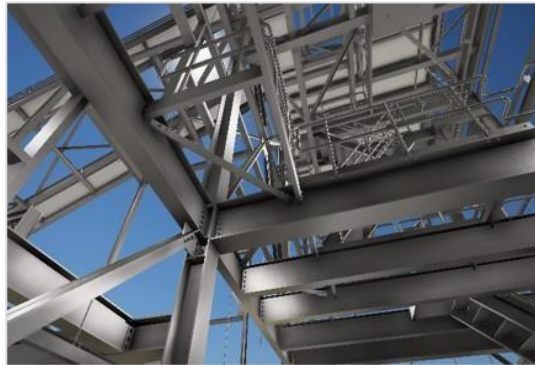
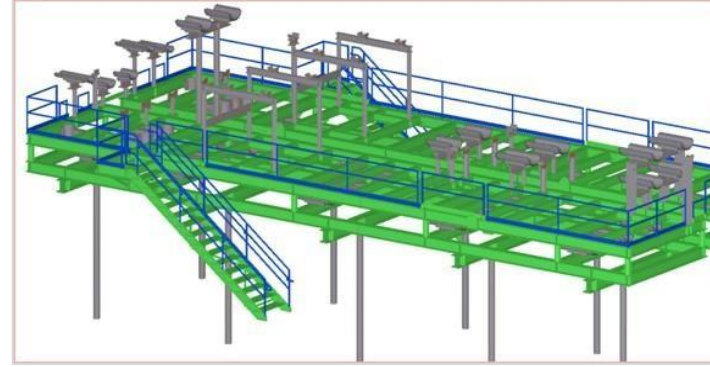
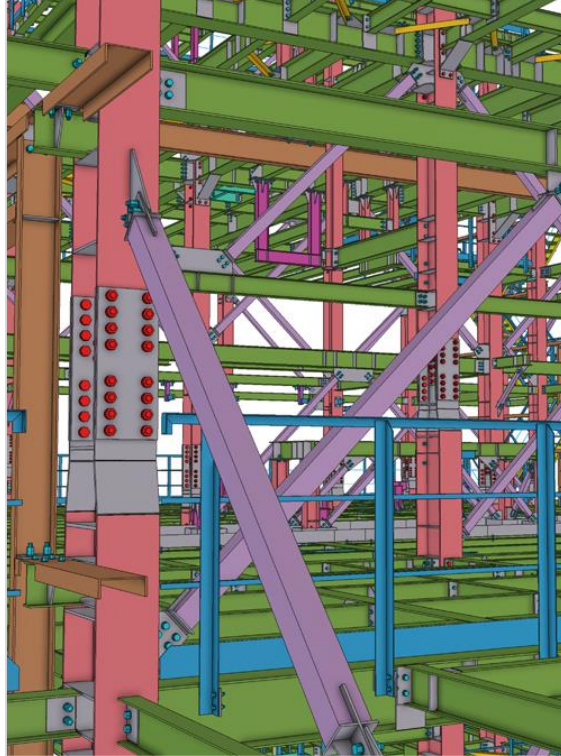
SPOOL AND FABRICATION DRAWINGS



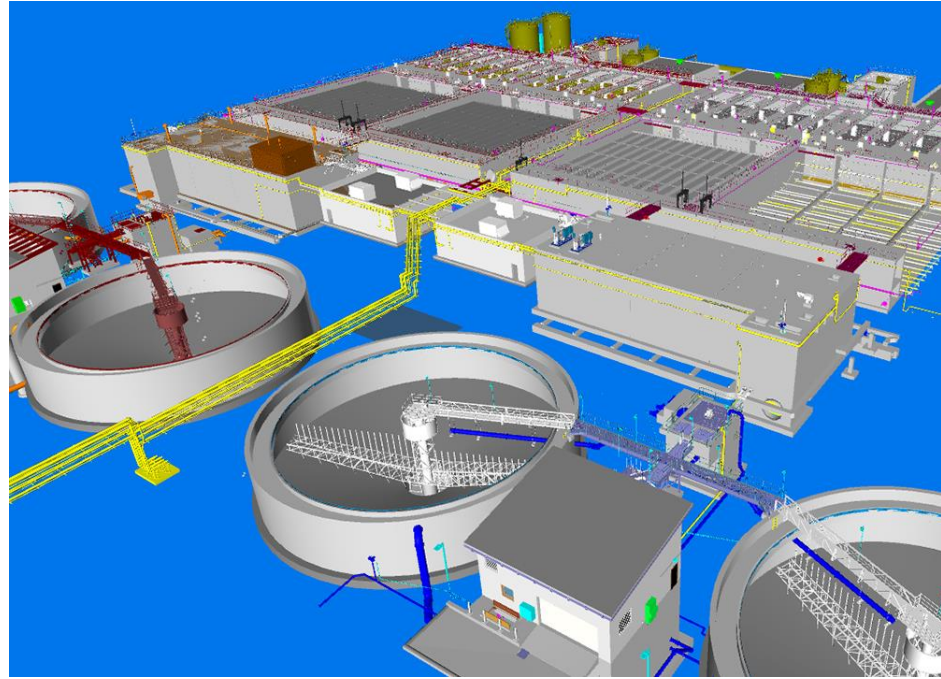
PROCESS SCHEMATIC DIAGRAM



STRUCTURAL 3D MODELING SERVICES



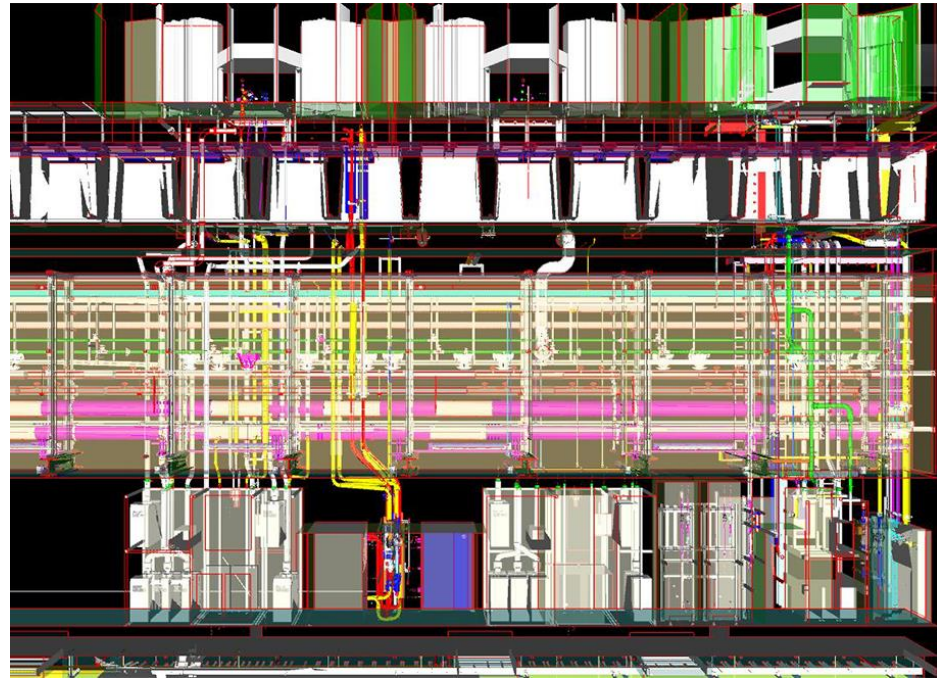
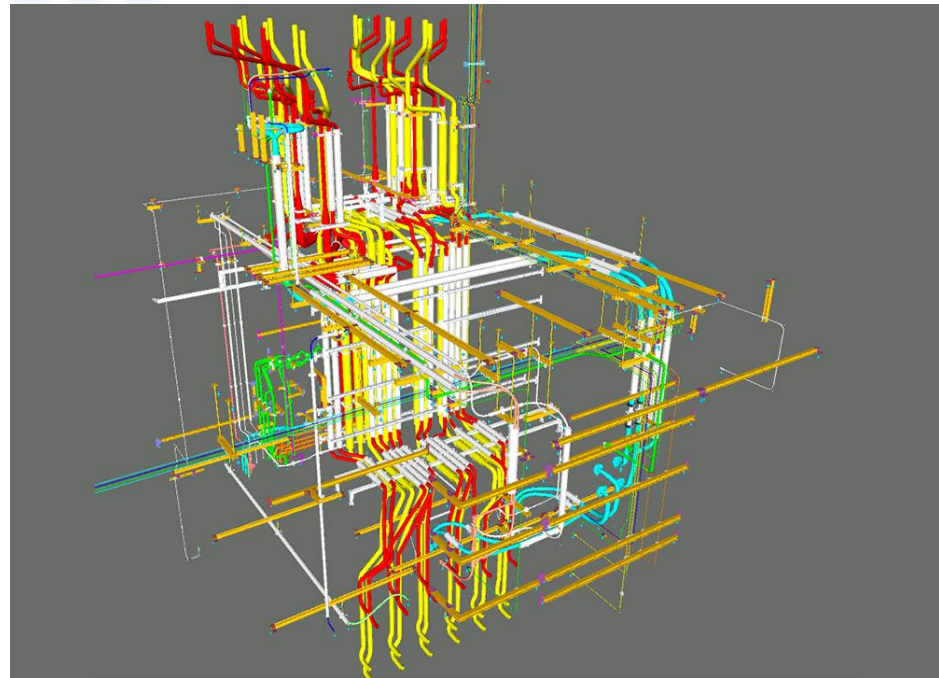
FEATURED PROJECTS



Water Purification Plant, Texas, USA



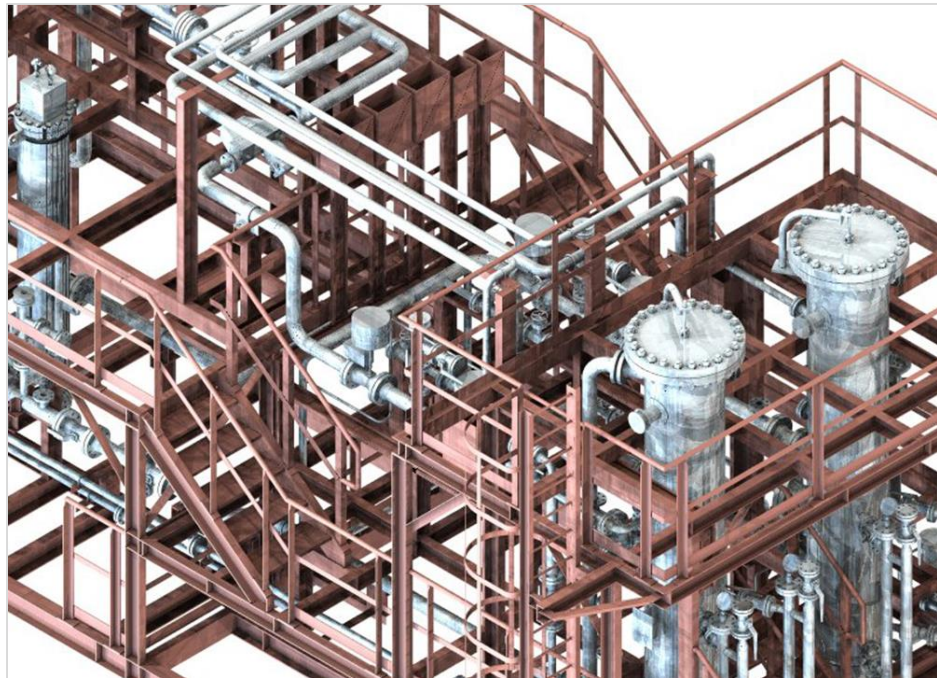
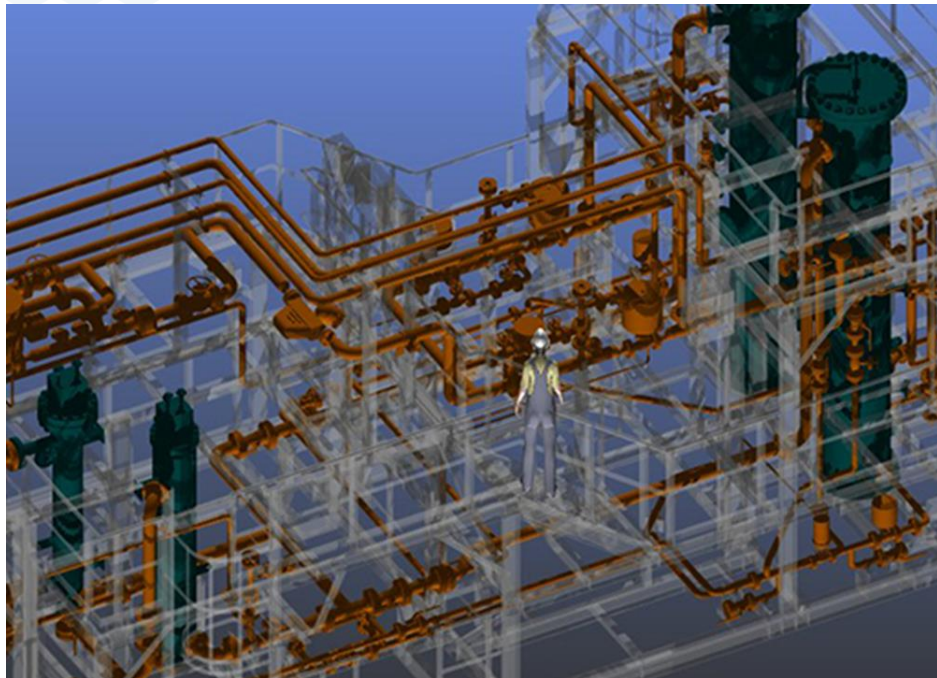
FEATURED PROJECTS



Data Center, Ireland



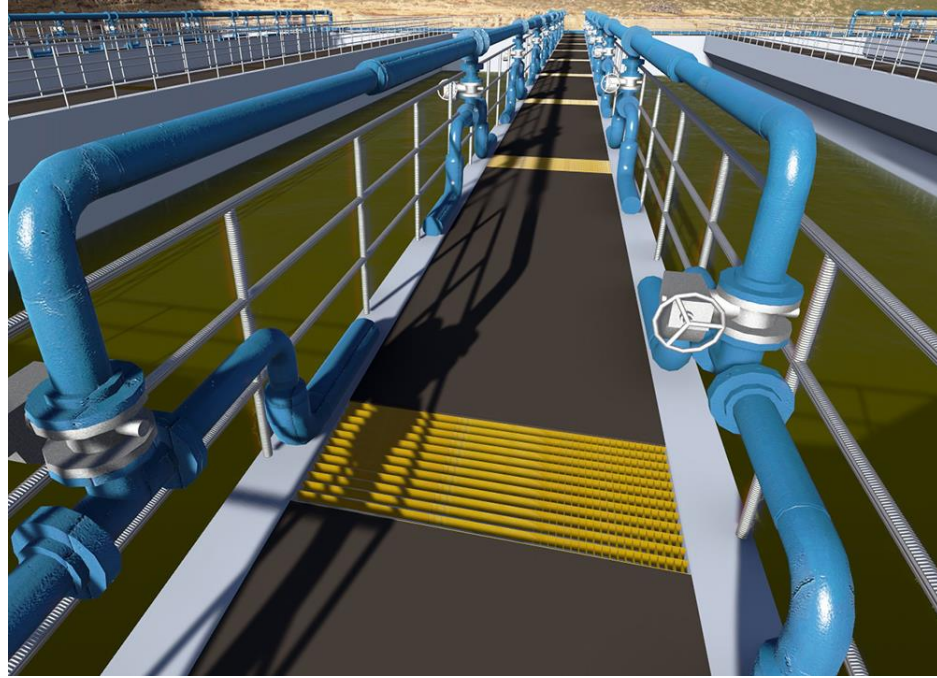
FEATURED PROJECTS



Oil and Gas Facility, Australia



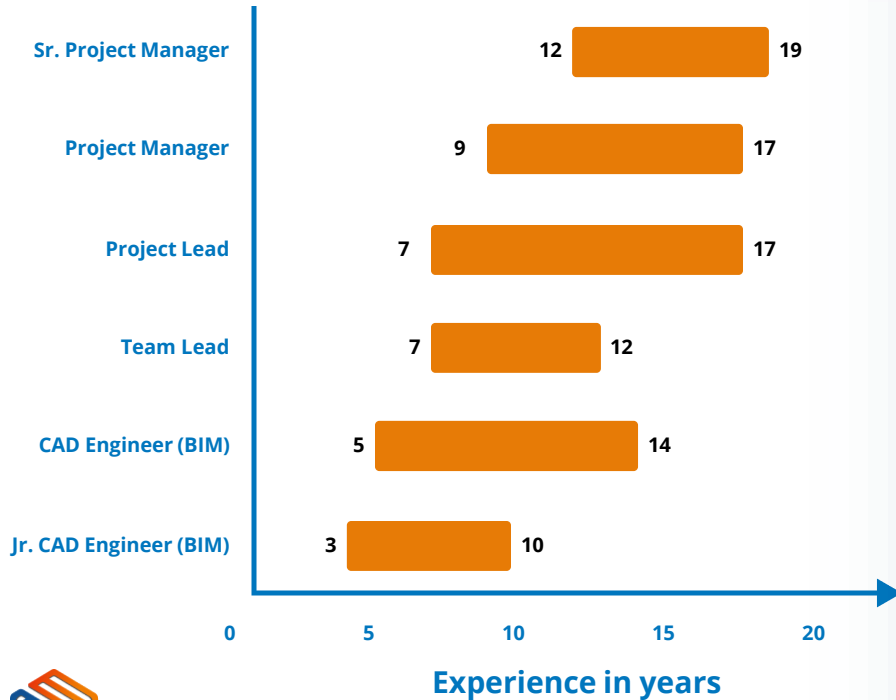
FEATURED PROJECTS



Water Treatment Plant, CA, USA



TEAM PROFICIENCY AND SOFTWARE PROFICIENCY



CONTACT US



Advenser Technology Services, Inc.

Five Neshaminy Interplex, STE 205
Trevose, PA 19053, USA
Phone: +1 (215) 791 7955



Advenser LLC

Five Neshaminy Interplex, STE 205
Trevose, PA 19053, USA
Phone: +1 (215) 934 2868



Advenser Engineering Services Pvt. Ltd.

43 A, E block, 4F CSEZ, Kakkanad
Kochi, Kerala, India. Pin 682 037
Phone: +91 484 298 8448



Advenser Engineering Systems LLC

P.O. Box No: 118901,
Dubai, UAE
Phone: +971 50 237 7430



Advenser Engineering Services Pty. Ltd.

Unit 26, 14 Jubilee Avenue
Warriewood NSW 2102, Australia
Phone: +61 363 877 090



Advenser Engineering Services Pvt. Ltd.

403, 4F, Lulu Cyber Tower 1, Infopark
Kochi, Kerala, India. Pin 682 042
Phone: +91 484 404 0708



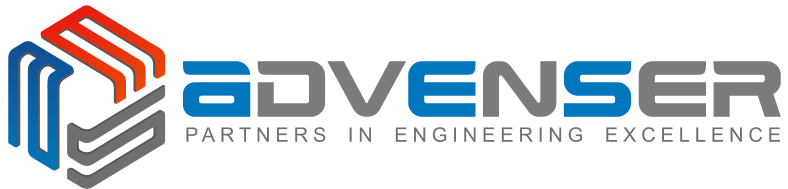
www.advenser.com



info@advenser.com

www.advenser.com

THANK YOU



info@advenser.com